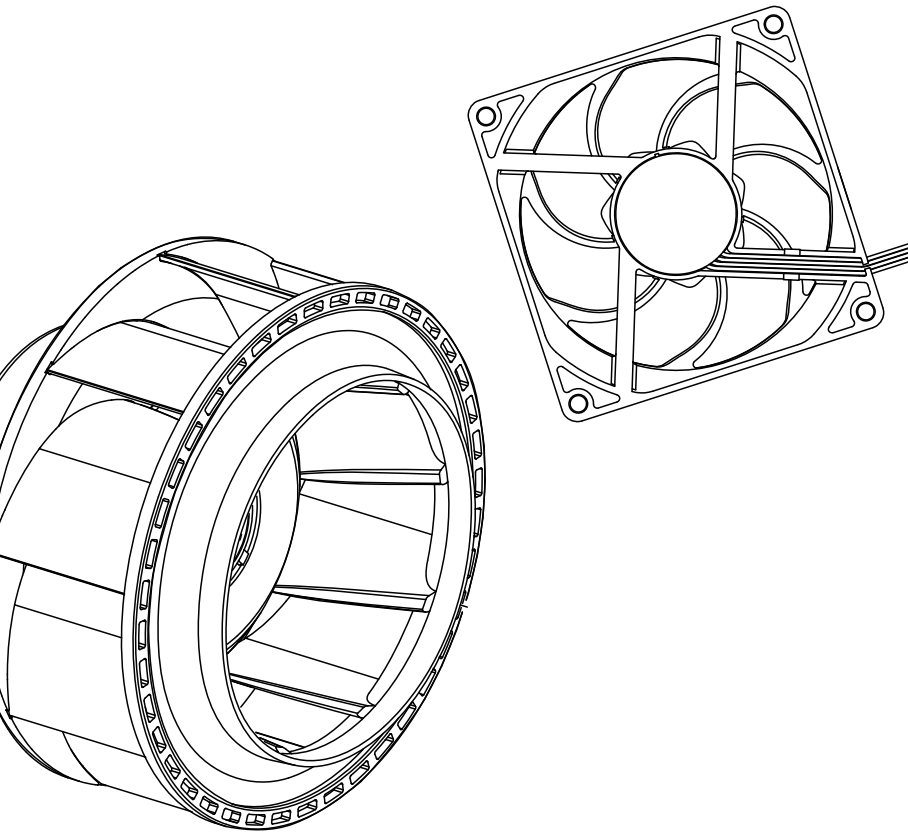


San Ace












Cooling Systems

Handy Catalog



SANYO DENKI

San Ace Cooling Systems

- DC Fan**pp. 12 to 22
Cooling fan operating at 5 V, 12 V, 24 V, and 48 VDC.
Wide lineup including low power consumption fans, silent fans,
and high airflow and high static pressure fans
36 mm sq. to ϕ 200 mm 
- Counter Rotating Fan**pp. 23 to 25
Airflow and static pressure become higher than two conventional
products of the same size connected in a series
38 mm sq. to ϕ 172 mm 
- Reversible Flow Fan**p. 25
The wind directions can be switched with these fans. Equivalent
cooling performance can be obtained in both directions.
 ϕ 92 mm, ϕ 136 mm 
- Splash Proof Fan**pp. 26 to 28
Cooling fan of IP54, IP55 and IP68 waterproof capability
40 mm sq. to ϕ 172 mm 
- Splash Proof Centrifugal Fan**pp. 29 to 30
Centrifugal fans of IP54 and IP56 waterproof capability.
 ϕ 100 mm to 270 mm sq. 
- Splash Proof Blower**p. 30
This fan specializes in high static pressure and has IP68-rated water
resistance.
97 mm 
- Oil Proof Fan**pp. 31 to 32
Cooling fan capable of operating in an oil-mist environment
40 mm sq. to 120 mm sq. 
- Long Life Fan**pp. 33 to 34
Cooling fan with Max. 180,000 hours of expected life
40 mm sq. to ϕ 172 mm 
- Wide Temperature Range Fan**p. 35
Wide Temperature Range Fan with Industry-leading -40 to $+85^{\circ}\text{C}$
Operating Temperature Range
40 mm sq. to 120 mm sq. 
- G Proof Fan**p. 36
These fans are suitable for cooling CT scanners and other devices
subject to high G-force or vibration.
120 mm sq., ϕ 172 mm 
- Centrifugal Fan**pp. 36 to 37
Cooling fan blows air in a centrifugal course.
It features high static pressure.
 ϕ 70 mm to 270 mm sq. 

Blower

.....pp. 38 to 39

Cooling fan specialized for high static pressure
52 mm to 160 mm



ACDC Fan

.....pp. 40 to 41

This fan works while internally converting AC power into DC power,
providing the superior performance of a DC fan with the flexibility of AC input.
92 mm sq. to 270 mm sq.



AC Fan

.....pp. 42 to 45

The cooling fan operates at 100 to 230 VAC.
60 mm sq. to ϕ 172 mm





Only the 9CT1-U001 model is cUL-certified.



This IoT-enabled product offers automatic speed control and remote monitoring of fans. It enables preventive maintenance of equipment (IoT functionality), more efficient and quieter fan operation (automatic control), and optimized fan settings (manual control).

	With wireless LAN	Without wireless LAN	With wireless LAN, cUL certified
Model no.	9CT1-001	9CT1-002	9CT1-U001 ⁽¹⁾
Rated voltage [VDC]	12/24/48		12/24
Power consumption [W]	3.1 ⁽²⁾		
Max. input power	970 W or less		64 W or less (At 12 VDC) 100 W or less (At 24 VDC)
Operating voltage range [VDC]	7 to 60		7 to 27.6
Operating temperature range [°C]	-20 to +70		
Control functions	Manual / automatic		
Control signal	PWM signal High-level voltage (V _{OH}): 3.3/5 V Frequency: 25 kHz		
Monitoring criteria	Fan speed, fan current, fan operation hours, sensor detection value, external input		
No. of connectable fans	Max. 4		
Max. fan connection terminal current (per terminal)	5 A		5 A (At 12 VDC) 4 A (At 24 VDC)
Max. output current (Total)	20 A		5 A (At 12 VDC) 4 A (At 24 VDC)
No. of connectable sensors	Max. 4		
Compatible sensors ⁽³⁾	Temperature / humidity, air pressure, acceleration		
External I/O functions	Input	Photocoupler-isolated input, ON: 15 to 28.8 VDC, OFF: 0 to 5 VDC	
	Output	Photocoupler-isolated open-collector output, load voltage: 28.8 VDC or less, output current: 0.1 A or less	
Communication	Wireless	IEEE 802.11b/g/n, frequency: 2.4 GHz ⁽⁴⁾	IEEE 802.11b/g/n, frequency: 2.4 GHz ⁽⁴⁾
	Wired	Ethernet 10BASE-T, 100BASE-TX	
Size [mm]	50 (W) × 135 (D) × 180 (H)		
Mass [g]	450		
Material	Casing: Plastic		

(1) Use a UL Class 2 power supply. (2) For use of this product alone, at 20°C ambient temperature

(3) Use our dedicated sensors (options). (4) Available channels: Ch. 1 to 11

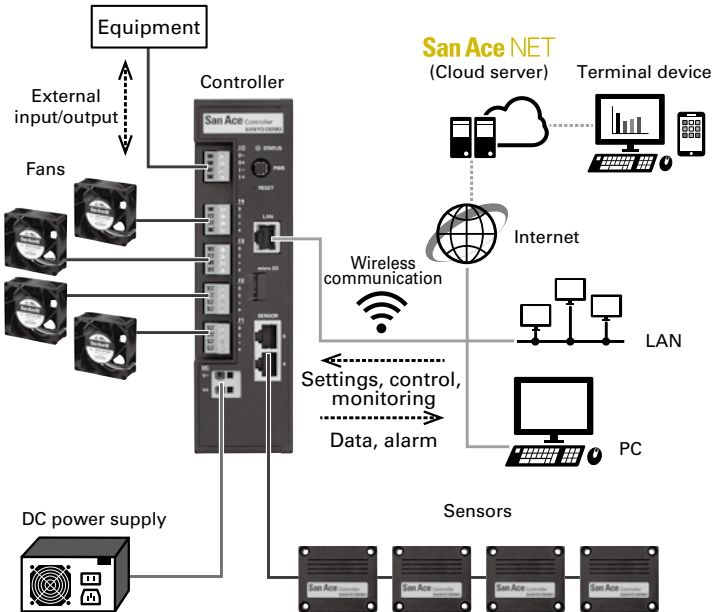
Options
Sensors



Sensor type	Temperature / Humidity sensor	Air pressure sensor	Accelerometer
Model no.	9CT1-T	9CT1-P	9CT1-A
Measurement range	Temperature: -20 to +70°C Humidity: 20 to 85% RH ⁽¹⁾	Air pressure: 800 to 1100 hPa	Acceleration: 0 to 60 m/s ² ⁽²⁾
Operating temperature range [°C]	-20 to +70		
Operating humidity range [% RH]	20 to 85 ⁽¹⁾		
Size [mm]	53 (W) × 46 (D) × 22 (H)		
Mass [g]	35		
Material	Casing: Plastic		

(1) Non-condensing (2) Total acceleration from three axes

Wiring Diagram





PCB type

■ PCB type

Model no.		9PC8045D-V001	9PC8045D-R001	9PC8045D-T001
Size [mm]		80 (H) × 45 (W) × 17 (D)		
Rated voltage [V]		12/24/48		
Power consumption [W]		0.2 ⁽¹⁾		
Operating temperature [°C]		-20 to +70		
Input terminal	Input voltage range [V] (V+, V-)	7 to 60		
	Control voltage range [V]	0 to 5.5		
Output terminal	PWM signal output	V _{OH} (high level voltage): 3.3 or 5 VDC selectable		
	PWM frequency [kHz]	25		
	Output current	20 mA max. (total sum of 4 terminals)		
	Output breakdown voltage [V]	6.5		
No. of connectable fans		Up to 4 fans		
Control functions		Voltage control	Variable resistor control ⁽²⁾	Thermistor control ⁽²⁾
Mounting method		Screw mounting		
Mass [g]		27		
Material		PCB: FR-4		

Model no.		9PC8045D-V101	9PC8045D-R101	9PC8045D-T101
Size [mm]		80 (H) × 45 (W) × 17 (D)		
Rated voltage [V]		12/24/48		
Power consumption [W]		0.2 ⁽¹⁾		
Operating temperature [°C]		-20 to +70		
Input terminal	Input voltage range [V] (V+, V-)	7 to 60		
	Control voltage range [V]	0 to 5.5		
Output terminal	PWM signal output	V _{OH} (high level voltage): 3.3 or 5 VDC selectable		
	PWM frequency [kHz]	1		
	Output current	20 mA max. (total sum of 4 terminals)		
	Output breakdown voltage [V]	6.5		
No. of connectable fans		Up to 4 fans		
Control functions		Voltage control	Variable resistor control ⁽²⁾	Thermistor control ⁽²⁾
Mounting method		Screw mounting		
Mass [g]		27		
Material		PCB: FR-4		

(1) When output terminals are turned on.

(2) Variable resistor and thermistor are not supplied with the controller and need to be prepared separately.

Note: Be noted that if applied input voltage or frequency is out of range of the connected fan, how the fan speed responds to the PWM duty cycle may be altered.



With connection duct mounted

This product is a portable measuring device that enables you to easily measure the system impedance and operating airflow of devices.

Model no.		9AT2560S-000□ ⁽¹⁾	9AT2560A-000□ ⁽¹⁾	9AT2560C-000□ ⁽¹⁾
Measurement units	Airflow	m ³ /min	CFM	CFM
	Static pressure	Pa	inchH ₂ O	Pa
Measurement range	Airflow	0.20 to 8.00 m ³ /min (Resolution: 0.01 m ³ /min)	7 to 282 CFM (Resolution: 1 CFM)	7 to 282 CFM (Resolution: 1 CFM)
	Static pressure	0 to 999 Pa (Resolution: 1 Pa)	0 to 4.01 inchH ₂ O (Resolution: 0.01 inchH ₂ O)	0 to 999 Pa (Resolution: 1 Pa)
Measurement accuracy	Airflow	±7% of maximum measurable airflow with each nozzle		
	Static pressure	±10 Pa (0.04 inchH ₂ O) for measurement results < 200 Pa, ±50 Pa (0.20 inchH ₂ O) for measurement results ≥ 200 Pa		
Operating environment	Ambient temperature	0 to 40 °C		
	Humidity	20 to 85% RH (non-condensing)		
Display		Data no., Measurement values (airflow, static pressure ⁽²⁾), Measurement status, Nozzle selection, Measurement mode selection		
Interface		Digital output: Included USB serial adapter		
Power supply	Input voltage	100 to 240 VAC, 50/60 Hz		
	Power consumption	260 VA max.		
Dimensions		600 (W) × 250 (H) × 250 (D) mm		
Mass		Main unit: Approx. 6 kg, Connection duct (including board holder): Approx. 1.5 kg		
Included peripherals		1 Set of measurement nozzles, Plastic mounting board (5 pcs/set), Connection duct, AC power cable (2.5 m), USB serial adapter, Instruction manual, Quick start guide, Data viewer software		

(1) The AC power plug shape differs with the number in □ of model numbers.

AC power plug included in models with 1 in □ is for Japan and North America regions (2 parallel flat pins + a round grounding pin), Input voltage: 100/120 VAC, 50/60 Hz

AC power plug included in models with 2 in □ is for Europe region (2 round pins + a female grounding contact), Input voltage: 220 VAC, 50 Hz

AC power plug included in models with 3 in □ is for China region (2 angled flat pins + a flat grounding pin), Input voltage: 220 VAC, 50 Hz

Product also available without an AC power cable. Model no. 9AT2560S-0000, 9AT2560A-0000, 9AT2560C-0000

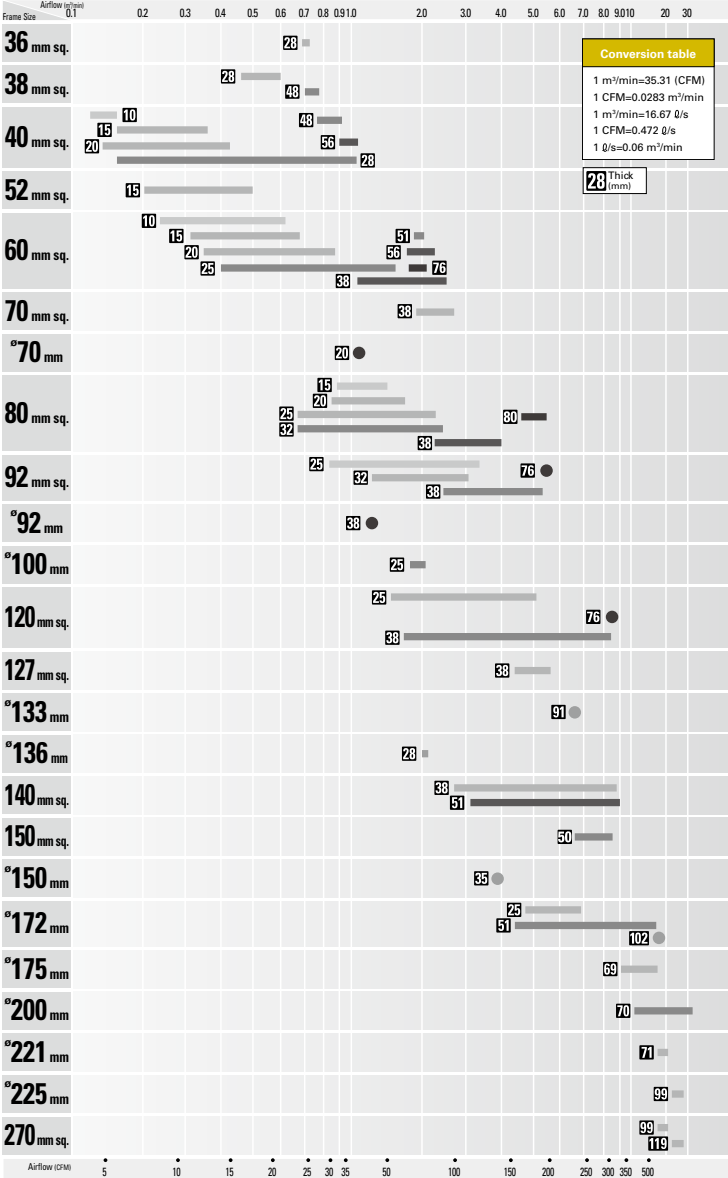
(2) Static pressure values are calculated with standard atmosphere as 1013 hPa at 20 °C.

Examples of Custom-Built Cooling Fan Units



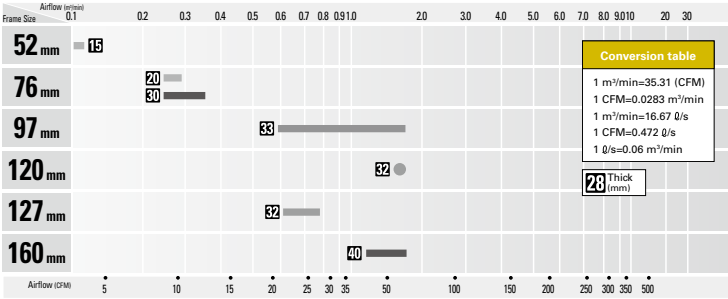
- We build cooling systems that are most suitable for the client's purposes. The unit includes a range of cooling fans that are optimally adjusted according to the situation and a custom-made fan unit.
- In addition, we design and develop fan units that are optimally suited to the client's requirements.

DC Fan Domain Diagram

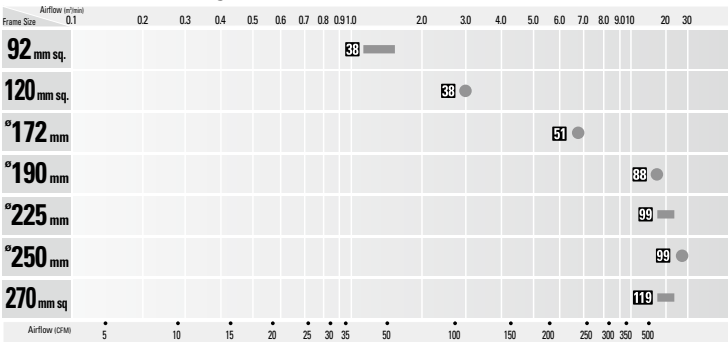


Listed are the Model Number excerpts of SanAce Catalog.
 For other line-up and technical documents, please refer to the Catalog.

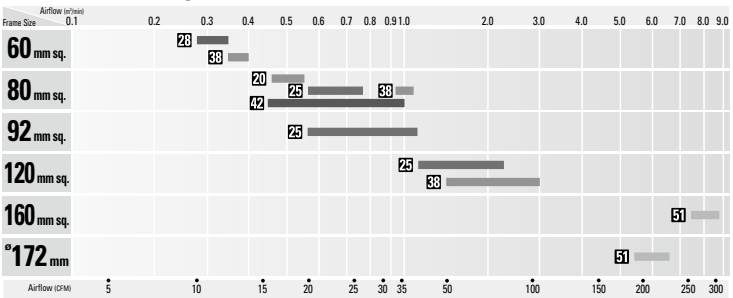
Blower



ACDC Fan Domain Diagram



AC Fan Domain Diagram



Listed are the Model Number excerpts of SanAce Catalog.
For other line-up and technical documents, please refer to the Catalog.

**36×36×28 mm 9HV type**

Model No.	Rated Voltage [V]	Rated Current [A]	Rated Speed [min ⁻¹]	Max. Airflow [m ³ /min] [CFM]	Max. Static Pressure [Pa] [inchH ₂ O]	SPL [dB (A)]
9HV3612P3K001	12	1.75	32500	0.72 25.4	1400 5.62	67

**36×36×28 mm 9GX type**

Model No.	Rated Voltage [V]	Rated Current [A]	Rated Speed [min ⁻¹]	Max. Airflow [m ³ /min] [CFM]	Max. Static Pressure [Pa] [inchH ₂ O]	SPL [dB (A)]
9GX3612P3K001	12	1.3	24000	0.69 24.4	838 3.367	66

**Low Power Consumption Fan****38×38×28 mm 9GA type**

Model No.	Rated Voltage [V]	Rated Current [A]	Rated Speed [min ⁻¹]	Max. Airflow [m ³ /min] [CFM]	Max. Static Pressure [Pa] [inchH ₂ O]	SPL [dB (A)]
9GA0312P3K001	12	0.62	25000	0.6 21.2	800 3.21	59.0

**40×40×10 mm 9P type**

Model No.	Rated Voltage [V]	Rated Current [A]	Rated Speed [min ⁻¹]	Max. Airflow [m ³ /min] [CFM]	Max. Static Pressure [Pa] [inchH ₂ O]	SPL [dB (A)]
109P0405H901	5	0.16	6200	0.15 5.3	41.2 0.165	25
109P0412H901	12	0.07	6200	0.15 5.3	41.2 0.165	25
109P0424H901	24	0.04	6200	0.15 5.3	41.2 0.165	25

**Low Power Consumption Fan****40×40×15 mm 9GA type**

Model No.	Rated Voltage [V]	Rated Current [A]	Rated Speed [min ⁻¹]	Max. Airflow [m ³ /min] [CFM]	Max. Static Pressure [Pa] [inchH ₂ O]	SPL [dB (A)]
9GA0412P7G001	12	0.17	13100	0.36 12.7	192 0.77	42

**40×40×15 mm 9P type**

Model No.	Rated Voltage [V]	Rated Current [A]	Rated Speed [min ⁻¹]	Max. Airflow [m ³ /min] [CFM]	Max. Static Pressure [Pa] [inchH ₂ O]	SPL [dB (A)]
109P0405H701	5	0.28	7700	0.18 6.4	75.5 0.303	28
109P0412H701	12	0.13	7700	0.18 6.4	75.5 0.303	28
109P0424H701	24	0.08	7700	0.18 6.4	75.5 0.303	28

**Low Power Consumption Fan****40×40×20 mm 9GA type**

Model No.	Rated Voltage [V]	Rated Current [A]	Rated Speed [min ⁻¹]	Max. Airflow [m ³ /min] [CFM]	Max. Static Pressure [Pa] [inchH ₂ O]	SPL [dB (A)]
9GA0405P6H001	5	0.35	12400	0.33 11.7	191 0.77	40
9GA0412P6G001	12	0.23	16000	0.42 14.8	318 1.28	47
9GA0424P6G001	24	0.13	16000	0.42 14.8	318 1.28	47



40 × 40 × 20 mm 9P type



Model No.	Rated Voltage [V]	Rated Current [A]	Rated Speed [min ⁻¹]	Max. Airflow [m ³ /min] [CFM]	Max. Static Pressure [Pa] [inchH ₂ O]	SPL [dB (A)]
109P0405F601	5	0.25	6500	0.183 6.5	45.1 0.181	28
109P0412F601	12	0.09	6500	0.183 6.5	45.1 0.181	28
109P0424F601	24	0.06	6500	0.183 6.5	45.1 0.181	28



40 × 40 × 28 mm 9HVA type



Model No.	Rated Voltage [V]	Rated Current [A]	Rated Speed [min ⁻¹]	Max. Airflow [m ³ /min] [CFM]	Max. Static Pressure [Pa] [inchH ₂ O]	SPL [dB (A)]
9HVA0412P3J001	12	2.6	38000	1.05 37.1	2300 9.24	71
9HVA0424P3G001	24	0.88	33000	0.92 32.5	1650 6.63	68



Low Power Consumption Fan

40 × 40 × 28 mm 9GAX type



Model No.	Rated Voltage [V]	Rated Current [A]	Rated Speed [min ⁻¹]	Max. Airflow [m ³ /min] [CFM]	Max. Static Pressure [Pa] [inchH ₂ O]	SPL [dB (A)]
9GAX0412P3S001	12	1.3	25000	0.9 31.8	1000 4.02	64



40 × 40 × 28 mm 9HV type



Model No.	Rated Voltage [V]	Rated Current [A]	Rated Speed [min ⁻¹]	Max. Airflow [m ³ /min] [CFM]	Max. Static Pressure [Pa] [inchH ₂ O]	SPL [dB (A)]
9HV0412P3K001	12	1.52	25000	0.83 29.3	1100 4.42	65



Low Power Consumption Fan

40 × 40 × 28 mm 9GA type



Model No.	Rated Voltage [V]	Rated Current [A]	Rated Speed [min ⁻¹]	Max. Airflow [m ³ /min] [CFM]	Max. Static Pressure [Pa] [inchH ₂ O]	SPL [dB (A)]
9GA0412P3K01	12	0.92	22000	0.81 28.6	799 3.21	61
9GA0424P3J001	24	0.27	18000	0.67 23.7	535 2.15	54



Low Vibration Fan

40 × 40 × 28 mm 9GE type



Model No.	Rated Voltage [V]	Rated Current [A]	Rated Speed [min ⁻¹]	Max. Airflow [m ³ /min] [CFM]	Max. Static Pressure [Pa] [inchH ₂ O]	SPL [dB (A)]
9GE0412P3K03	12	0.84	16500	0.76 26.8	415 1.666	58



40 × 40 × 28 mm 9P type



Model No.	Rated Voltage [V]	Rated Current [A]	Rated Speed [min ⁻¹]	Max. Airflow [m ³ /min] [CFM]	Max. Static Pressure [Pa] [inchH ₂ O]	SPL [dB (A)]
109P0405H3013	5	0.68	8700	0.32 11.3	102.9 0.414	37
109P0412G3013	12	0.31	11500	0.42 14.8	179 0.719	42
109P0424G3013	24	0.19	11500	0.42 14.8	179 0.719	42



Low Power Consumption Fan

52×52×15 mm 9GA type



Model No.	Rated Voltage [V]	Rated Current [A]	Rated Speed [min ⁻¹]	Max. Airflow [m ³ /min] [CFM]	Max. Static Pressure [Pa] [inchH ₂ O]	SPL [dB (A)]
9GA0512P7G001	12	0.13	7800	0.5 17.7	91.5 0.367	38
9GA0524P7G001	24	0.07	7800	0.5 17.7	91.5 0.367	38



52×52×15 mm 9P type



Model No.	Rated Voltage [V]	Rated Current [A]	Rated Speed [min ⁻¹]	Max. Airflow [m ³ /min] [CFM]	Max. Static Pressure [Pa] [inchH ₂ O]	SPL [dB (A)]
109P0505M701	5	0.15	3700	0.205 7.24	21.4 0.086	22



Low Power Consumption Fan

60×60×10 mm 9GA type



Model No.	Rated Voltage [V]	Rated Current [A]	Rated Speed [min ⁻¹]	Max. Airflow [m ³ /min] [CFM]	Max. Static Pressure [Pa] [inchH ₂ O]	SPL [dB (A)]
9GA0612G9001	12	0.27	6200	0.62 21.9	66 0.26	43



Low Power Consumption Fan

60×60×15 mm 9GA type



Model No.	Rated Voltage [V]	Rated Current [A]	Rated Speed [min ⁻¹]	Max. Airflow [m ³ /min] [CFM]	Max. Static Pressure [Pa] [inchH ₂ O]	SPL [dB (A)]
9GA0612P7G01	12	0.16	5900	0.68 24	80 0.32	38
9GA0624P7G01	24	0.08	5900	0.68 24.0	80 0.32	38



Low Power Consumption Fan

60×60×20 mm 9GA type



Model No.	Rated Voltage [V]	Rated Current [A]	Rated Speed [min ⁻¹]	Max. Airflow [m ³ /min] [CFM]	Max. Static Pressure [Pa] [inchH ₂ O]	SPL [dB (A)]
9GA0612P6G001	12	0.26	6850	0.88 31.1	125 0.5	43
9GA0624P6G001	24	0.12	6850	0.88 31.1	125 0.5	43



60×60×25 mm 9G type



Model No.	Rated Voltage [V]	Rated Current [A]	Rated Speed [min ⁻¹]	Max. Airflow [m ³ /min] [CFM]	Max. Static Pressure [Pa] [inchH ₂ O]	SPL [dB (A)]
9G0612P4S001	12	0.67	11000	1.4 49.4	300 1.2	53
9G0624P4S001	24	0.34	11000	1.4 49.4	300 1.2	53
9G0648P4S001	48	0.18	11000	1.4 49.4	305 1.22	53


60×60×25 mm 9RA type


Model No.	Rated Voltage [V]	Rated Current [A]	Rated Speed [min ⁻¹]	Max. Airflow		Max. Static Pressure		SPL
				[m ³ /min]	[CFM]	[Pa]	[inchH ₂ O]	[dB (A)]
9RA0612P4J001	12	0.35	7700	1.1	38.8	130	0.52	41
9RA0624P4J001	24	0.18	7700	1.1	38.8	130	0.52	41
9RA0648P4J001	48	0.1	7700	1.1	38.8	130	0.52	41


Silent Fan
60×60×25 mm 9S type


Model No.	Rated Voltage [V]	Rated Current [A]	Rated Speed [min ⁻¹]	Max. Airflow		Max. Static Pressure		SPL
				[m ³ /min]	[CFM]	[Pa]	[inchH ₂ O]	[dB (A)]
9S0612S401	12	0.2	5000	0.74	26.1	65.7	0.26	31


60×60×38 mm 9HVA type


Model No.	Rated Voltage [V]	Rated Current [A]	Rated Speed [min ⁻¹]	Max. Airflow		Max. Static Pressure		SPL
				[m ³ /min]	[CFM]	[Pa]	[inchH ₂ O]	[dB (A)]
9HVA0612P1J001	12	2.8	24800	2.39	84.3	2000	8.0	68


60×60×38 mm 9HV type


Model No.	Rated Voltage [V]	Rated Current [A]	Rated Speed [min ⁻¹]	Max. Airflow		Max. Static Pressure		SPL
				[m ³ /min]	[CFM]	[Pa]	[inchH ₂ O]	[dB (A)]
9HV0612P1J001	12	2.7	21700	1.88	66.4	1750	7.0	68


Low Power Consumption Fan
60×60×38 mm 9GA type


Model No.	Rated Voltage [V]	Rated Current [A]	Rated Speed [min ⁻¹]	Max. Airflow		Max. Static Pressure		SPL
				[m ³ /min]	[CFM]	[Pa]	[inchH ₂ O]	[dB (A)]
9GA0612P1J03	12	1.5	17500	1.75	62	820	3.3	63
9GA0624P1J03	24	0.75	17500	1.75	62	820	3.3	63
9GA0648P1K03	48	0.24	14800	1.5	53	600	2.4	59


60×60×38 mm 9GV type


Model No.	Rated Voltage [V]	Rated Current [A]	Rated Speed [min ⁻¹]	Max. Airflow		Max. Static Pressure		SPL
				[m ³ /min]	[CFM]	[Pa]	[inchH ₂ O]	[dB (A)]
9GV0612P1G03	12	2.8	16000	2.37	84	751	3.02	66
9GV0624P1G03	24	1.4	16000	2.37	84	751	3.02	66


Low Power Consumption Fan
70×70×38 mm 9GA type


Model No.	Rated Voltage [V]	Rated Current [A]	Rated Speed [min ⁻¹]	Max. Airflow		Max. Static Pressure		SPL
				[m ³ /min]	[CFM]	[Pa]	[inchH ₂ O]	[dB (A)]
9GA0712P1G001	12	2.6	16500	2.65	93.6	860	3.45	65

DC Fan



Low Power Consumption Fan

80×80×15 mm 9GA type



Model No.	Rated Voltage [V]	Rated Current [A]	Rated Speed [min ⁻¹]	Max. Airflow [m ³ /min] [CFM]	Max. Static Pressure [Pa] [inchH ₂ O]	SPL [dB (A)]
9GA0812P7G001	12	0.29	6100	1.44 50.9	84.0 0.34	41
9GA0824P7G001	24	0.13	6100	1.44 50.9	84.0 0.34	41



Low Power Consumption Fan

80×80×20 mm 9GA type



Model No.	Rated Voltage [V]	Rated Current [A]	Rated Speed [min ⁻¹]	Max. Airflow [m ³ /min] [CFM]	Max. Static Pressure [Pa] [inchH ₂ O]	SPL [dB (A)]
9GA0812P6G001	12	0.3	5850	1.72 60.78	110 0.44	45
9GA0824P6G001	24	0.15	5850	1.72 60.78	110 0.44	45



80×80×20 mm 9P type



Model No.	Rated Voltage [V]	Rated Current [A]	Rated Speed [min ⁻¹]	Max. Airflow [m ³ /min] [CFM]	Max. Static Pressure [Pa] [inchH ₂ O]	SPL [dB (A)]
109P0848C601	48	0.08	3700	1.07 37.8	46 0.185	39



Low Power Consumption Fan

80×80×25 mm 9GA type



Model No.	Rated Voltage [V]	Rated Current [A]	Rated Speed [min ⁻¹]	Max. Airflow [m ³ /min] [CFM]	Max. Static Pressure [Pa] [inchH ₂ O]	SPL [dB (A)]
9GA0812P4J001	12	0.6	7400	2.07 73.0	177.6 0.7	48
9GA0824P4J001	24	0.28	7400	2.07 73.0	177.6 0.7	48



80×80×25 mm 9RA type



Model No.	Rated Voltage [V]	Rated Current [A]	Rated Speed [min ⁻¹]	Max. Airflow [m ³ /min] [CFM]	Max. Static Pressure [Pa] [inchH ₂ O]	SPL [dB (A)]
9RA0812P4G001	12	0.22	5000	1.4 49.4	83 0.33	37
9RA0824P4G001	24	0.11	5000	1.4 49.4	83 0.33	37
9RA0848P4G001	48	0.07	5000	1.4 49.4	83 0.33	37



Silent Fan

80×80×25 mm 9S type



Model No.	Rated Voltage [V]	Rated Current [A]	Rated Speed [min ⁻¹]	Max. Airflow [m ³ /min] [CFM]	Max. Static Pressure [Pa] [inchH ₂ O]	SPL [dB (A)]
9S0812H401	12	0.23	3400	1.12 39.5	52.15 0.2	31
9S0824M401	24	0.06	2500	0.83 29.3	27.5 0.11	22


Low Power Consumption Fan
80 × 80 × 32 mm 9GA type


Model No.	Rated Voltage [V]	Rated Current [A]	Rated Speed [min ⁻¹]	Max. Airflow		Max. Static Pressure		SPL
				[m ³ /min]	[CFM]	[Pa]	[inchH ₂ O]	[dB (A)]
9GA0812P2S001	12	0.83	9700	2.45	86.5	360	1.45	57
9GA0824P2S001	24	0.42	9700	2.45	86.5	360	1.45	57
9GA0848P2S001	48	0.22	9700	2.45	86.5	360	1.45	57


80 × 80 × 38 mm 9HVB type


Model No.	Rated Voltage [V]	Rated Current [A]	Rated Speed [min ⁻¹]	Max. Airflow		Max. Static Pressure		SPL
				[m ³ /min]	[CFM]	[Pa]	[inchH ₂ O]	[dB (A)]
9HVB0812P1G001	12	4.8	18300	4.0	141.3	1600	6.42	75


80 × 80 × 38 mm 9HVA type


Model No.	Rated Voltage [V]	Rated Current [A]	Rated Speed [min ⁻¹]	Max. Airflow		Max. Static Pressure		SPL
				[m ³ /min]	[CFM]	[Pa]	[inchH ₂ O]	[dB (A)]
9HVA0848P1G601	48	0.9	16100	3.75	132	1250	5.0	73


80 × 80 × 38 mm 9HV type


Model No.	Rated Voltage [V]	Rated Current [A]	Rated Speed [min ⁻¹]	Max. Airflow		Max. Static Pressure		SPL
				[m ³ /min]	[CFM]	[Pa]	[inchH ₂ O]	[dB (A)]
9HV0812P1G601	12	3.4	14900	3.7	130.7	1000	4.0	69
9HV0824P1G003	24	1.7	14900	3.7	130.7	1000	4.0	69
9HV0848P1G001	48	0.85	14900	3.7	130.7	1000	4.0	69


Low Power Consumption Fan
80 × 80 × 38 mm 9GA type


Model No.	Rated Voltage [V]	Rated Current [A]	Rated Speed [min ⁻¹]	Max. Airflow		Max. Static Pressure		SPL
				[m ³ /min]	[CFM]	[Pa]	[inchH ₂ O]	[dB (A)]
9GA0812P1G61	12	1.2	10500	2.85	100.6	480	1.93	60
9GA0824P1S61	24	0.47	9550	2.6	91.8	480	1.93	59
9GA0848P1S61	48	0.25	9550	2.6	91.8	480	1.93	59


80 × 80 × 38 mm 9GV type


Model No.	Rated Voltage [V]	Rated Current [A]	Rated Speed [min ⁻¹]	Max. Airflow		Max. Static Pressure		SPL
				[m ³ /min]	[CFM]	[Pa]	[inchH ₂ O]	[dB (A)]
9GV0812P1G03	12	3.8	10200	3.9	138.0	490.0	1.97	65
9GV0824P1G03	24	1.6	10200	3.9	138.0	490.0	1.97	65
9GV0848P1G03	48	0.84	10200	3.9	138.0	490.0	1.97	65

**80×80×38 mm 9G type**

Model No.	Rated Voltage [V]	Rated Current [A]	Rated Speed [min ⁻¹]	Max. Airflow		Max. Static Pressure		SPL
				[m ³ /min]	[CFM]	[Pa]	[inchH ₂ O]	[dB (A)]
9G0812G101	12	1.1	6300	2.55	90	211	0.847	51
9G0824G101	24	0.56	6300	2.55	90	211	0.847	51
9G0848G101	48	0.27	6300	2.55	90	211	0.847	51

**92×92×25 mm 9HV type**

Model No.	Rated Voltage [V]	Rated Current [A]	Rated Speed [min ⁻¹]	Max. Airflow		Max. Static Pressure		SPL
				[m ³ /min]	[CFM]	[Pa]	[inchH ₂ O]	[dB (A)]
9HV0912P4G001	12	1.23	7350	3.35	118	280	1.12	56
9HV0924P4G001	24	0.61	7350	3.35	118	280	1.12	56

**Low Power Consumption Fan****92×92×25 mm 9GA type**

Model No.	Rated Voltage [V]	Rated Current [A]	Rated Speed [min ⁻¹]	Max. Airflow		Max. Static Pressure		SPL
				[m ³ /min]	[CFM]	[Pa]	[inchH ₂ O]	[dB (A)]
9GA0912P4J03	12	0.39	5000	2.2	77.7	105	0.42	43
9GA0924P4J03	24	0.2	5000	2.2	77.7	105	0.42	43

**92×92×25 mm 9RA type**

Model No.	Rated Voltage [V]	Rated Current [A]	Rated Speed [min ⁻¹]	Max. Airflow		Max. Static Pressure		SPL
				[m ³ /min]	[CFM]	[Pa]	[inchH ₂ O]	[dB (A)]
9RA0912P4G001	12	0.22	4200	1.8	63.5	73.5	0.29	37
9RA0924P4G001	24	0.13	4200	1.8	63.5	73.5	0.29	37
9RA0948P4G001	48	0.07	4200	1.8	63.5	73.5	0.29	37

**Silent Fan****92×92×25 mm 9S type**

Model No.	Rated Voltage [V]	Rated Current [A]	Rated Speed [min ⁻¹]	Max. Airflow		Max. Static Pressure		SPL
				[m ³ /min]	[CFM]	[Pa]	[inchH ₂ O]	[dB (A)]
9S0912F401	12	0.14	2650	1.26	44.5	30.0	0.12	27
9S0924F401	24	0.09	2650	1.26	44.5	30.0	0.12	27

**92×92×32 mm 9G type**

Model No.	Rated Voltage [V]	Rated Current [A]	Rated Speed [min ⁻¹]	Max. Airflow		Max. Static Pressure		SPL
				[m ³ /min]	[CFM]	[Pa]	[inchH ₂ O]	[dB (A)]
9G0912A201	12	0.58	4300	2.5	88.3	115	0.462	44
9G0924A201	24	0.3	4300	2.5	88.3	115	0.462	44
9G0948A201	48	0.16	4300	2.5	88.3	115	0.462	44


92 × 92 × 38 mm 9HV type


Model No.	Rated Voltage [V]	Rated Current [A]	Rated Speed [min ⁻¹]	Max. Airflow		Max. Static Pressure		SPL
				[m ³ /min]	[CFM]	[Pa]	[inchH ₂ O]	[dB (A)]
9HV0912P1G001	12	5.2	14900	5.1	180	1100	4.42	72
9HV0924P1G001	24	2.50	14900	5.1	180	1100	4.42	72
9HV0948P1G001	48	1.2	14900	5.1	180	1100	4.42	72


Low Power Consumption Fan
92 × 92 × 38 mm 9GA type


Model No.	Rated Voltage [V]	Rated Current [A]	Rated Speed [min ⁻¹]	Max. Airflow		Max. Static Pressure		SPL
				[m ³ /min]	[CFM]	[Pa]	[inchH ₂ O]	[dB (A)]
9GA0912P1H03	12	2.1	9700	4.0	141	500	2.01	63
9GA0924P1H01	24	1.1	9700	4.0	141	500	2.01	63
9GA0948P1H03	48	0.55	9700	4.0	141	500	2.01	63


92 × 92 × 38 mm 9GV type


Model No.	Rated Voltage [V]	Rated Current [A]	Rated Speed [min ⁻¹]	Max. Airflow		Max. Static Pressure		SPL
				[m ³ /min]	[CFM]	[Pa]	[inchH ₂ O]	[dB (A)]
9GV0912P1G03	12	4.1	9000	5.35	189.0	430.0	1.73	68
9GV0948P1H03	48	0.82	8500	5.05	178.0	385.0	1.55	64


92 × 92 × 38 mm 9G type


Model No.	Rated Voltage [V]	Rated Current [A]	Rated Speed [min ⁻¹]	Max. Airflow		Max. Static Pressure		SPL
				[m ³ /min]	[CFM]	[Pa]	[inchH ₂ O]	[dB (A)]
9G0912G101	12	1.1	5000	3.1	110	150	0.602	50
9G0924G101	24	0.55	5000	3.1	110	150	0.602	50
9G0948G101	48	0.27	5000	3.1	110	150	0.602	50


Low Power Consumption Fan
120 × 120 × 25 mm 9GA type


Model No.	Rated Voltage [V]	Rated Current [A]	Rated Speed [min ⁻¹]	Max. Airflow		Max. Static Pressure		SPL
				[m ³ /min]	[CFM]	[Pa]	[inchH ₂ O]	[dB (A)]
9GA1212P4G001	12	0.93	6400	3.8	134	365	1.47	57
9GA1224P4G001	24	0.47	6400	3.8	134	365	1.47	57
9GA1248P4G001	48	0.24	6400	3.8	134	365	1.47	57


120 × 120 × 25 mm 9GV type


Model No.	Rated Voltage [V]	Rated Current [A]	Rated Speed [min ⁻¹]	Max. Airflow		Max. Static Pressure		SPL
				[m ³ /min]	[CFM]	[Pa]	[inchH ₂ O]	[dB (A)]
9GV1212P4G01	12	1.68	5100	4.83	171	224	0.9	58
9GV1224P4G01	24	0.84	5100	4.83	171	224	0.9	58
9GV1248P4J01	48	0.5	5400	5.11	180	251	1.01	59

DC Fan



120 × 120 × 25 mm 9RA type



Model No.	Rated Voltage [V]	Rated Current [A]	Rated Speed [min ⁻¹]	Max. Airflow [m ³ /min] [CFM]	Max. Static Pressure [Pa] [inchH ₂ O]	SPL [dB (A)]
9RA1212P4G001	12	0.55	4500	3.68 130	120 0.48	47
9RA1224P4G001	24	0.28	4500	3.68 130	120 0.48	47
9RA1248P4G001	48	0.15	4500	3.68 130	120 0.48	47



Silent Fan

120 × 120 × 25 mm 9S type



Model No.	Rated Voltage [V]	Rated Current [A]	Rated Speed [min ⁻¹]	Max. Airflow [m ³ /min] [CFM]	Max. Static Pressure [Pa] [inchH ₂ O]	SPL [dB (A)]
9S1212H401	12	0.39	2700	2.45 86.5	45.2 0.18	36
9S1224M401	24	0.06	1850	1.66 58.6	22.7 0.09	24



120 × 120 × 38 mm 9HV type



Model No.	Rated Voltage [V]	Rated Current [A]	Rated Speed [min ⁻¹]	Max. Airflow [m ³ /min] [CFM]	Max. Static Pressure [Pa] [inchH ₂ O]	SPL [dB (A)]
9HV1224P1A001	24	2.4	9600	7.0 247	950 3.82	71
9HV1248P1G001	48	2.0	11500	8.3 293	1300 5.22	75



120 × 120 × 38 mm 9SX type



Model No.	Rated Voltage [V]	Rated Current [A]	Rated Speed [min ⁻¹]	Max. Airflow [m ³ /min] [CFM]	Max. Static Pressure [Pa] [inchH ₂ O]	SPL [dB (A)]
9SX1212P1K001	12	4.4	7400	7.3 258	480 1.93	66



120 × 120 × 38 mm 9GV type



Model No.	Rated Voltage [V]	Rated Current [A]	Rated Speed [min ⁻¹]	Max. Airflow [m ³ /min] [CFM]	Max. Static Pressure [Pa] [inchH ₂ O]	SPL [dB (A)]
9GV1212P1J01	12	3.0	6400	6.35 224.0	360.0 1.45	64
9GV1224P1J01	24	1.5	6400	6.35 224.0	360 1.45	64
9GV1248P1J01	48	0.75	6400	6.35 224.0	360.0 1.45	64



120 × 120 × 38 mm 9RA type



Model No.	Rated Voltage [V]	Rated Current [A]	Rated Speed [min ⁻¹]	Max. Airflow [m ³ /min] [CFM]	Max. Static Pressure [Pa] [inchH ₂ O]	SPL [dB (A)]
9RA1212P1K001	12	0.96	4700	4.5 158	170 0.683	50
9RA1224P1K001	24	0.48	4700	4.5 158	170 0.683	50
9RA1248P1K001	48	0.25	4700	4.5 158	170 0.683	50


120 × 120 × 38 mm 9G type


Model No.	Rated Voltage		Rated Current [A]	Rated Speed [min ⁻¹]	Max. Airflow		Max. Static Pressure		SPL [dB (A)]
	[V]	[A]			[m ³ /min]	[CFM]	[Pa]	[inchH ₂ O]	
9G1212G101	12	0.98	3600	3.88	137	135	0.542	49	
9G1224G101	24	0.5	3600	3.88	137	135	0.542	49	
9G1248G101	48	0.25	3600	3.88	137	135	0.542	49	


127 × 127 × 38 mm 9E type


Model No.	Rated Voltage		Rated Current [A]	Rated Speed [min ⁻¹]	Max. Airflow		Max. Static Pressure		SPL [dB (A)]
	[V]	[A]			[m ³ /min]	[CFM]	[Pa]	[inchH ₂ O]	
109E1312A101	12	1.4	3850	4.81	170	155	0.622	52	
109E1324G101	24	1.1	4550	5.66	200	216	0.867	57	
109E1348G101	48	0.54	4550	5.66	200	216	0.867	57	


140 × 140 × 38 mm 9GV type


Model No.	Rated Voltage		Rated Current [A]	Rated Speed [min ⁻¹]	Max. Airflow		Max. Static Pressure		SPL [dB (A)]
	[V]	[A]			[m ³ /min]	[CFM]	[Pa]	[inchH ₂ O]	
9GV1412P1G001	12	4.6	7600	8.8	310	640	2.57	70	
9GV1424P1G001	24	2.3	7600	8.8	310	640	2.57	70	
9GV1448P1G001	48	1.15	7600	8.8	310	640	2.57	70	


140 × 140 × 38 mm 9P type


Model No.	Rated Voltage		Rated Current [A]	Rated Speed [min ⁻¹]	Max. Airflow		Max. Static Pressure		SPL [dB (A)]
	[V]	[A]			[m ³ /min]	[CFM]	[Pa]	[inchH ₂ O]	
109P1412H101	12	0.73	2600	4.5	159	94	0.378	46	
109P1424H101	24	0.37	2600	4.5	159	94	0.378	46	
109P1448H101	48	0.2	2600	4.5	159	94	0.378	46	


150 × 150 × 50 mm 9GV type


Model No.	Rated Voltage		Rated Current [A]	Rated Speed [min ⁻¹]	Max. Airflow		Max. Static Pressure		SPL [dB (A)]
	[V]	[A]			[m ³ /min]	[CFM]	[Pa]	[inchH ₂ O]	
9GV1512H501	12	2.9	3900	8.54	300	210	0.84	61	
9GV1524M501	24	0.6	3000	6.35	224	132	0.53	53	


ø172 × 147 × 25 mm 9E type


Model No.	Rated Voltage		Rated Current [A]	Rated Speed [min ⁻¹]	Max. Airflow		Max. Static Pressure		SPL [dB (A)]
	[V]	[A]			[m ³ /min]	[CFM]	[Pa]	[inchH ₂ O]	
109E4712M401	12	1.3	2800	5.2	183	92	0.369	51	
109E4724H401	24	1.0	3400	6.4	226	135	0.542	57	
109E4748S401	48	0.62	3650	6.8	240	156	0.627	58	

DC Fan



Ø172 × 150 × 51 mm 9HV type



Model No.	Rated Voltage [V]	Rated Current [A]	Rated Speed [min ⁻¹]	Max. Airflow [m ³ /min] [CFM]	Max. Static Pressure [Pa] [inchH ₂ O]	SPL [dB (A)]
9HV5724P5H001	24	5.0	8000	12.3 434	1000 4.02	77
9HV5748P5G001	48	5.0	10500	16.1 568	1600 6.43	83



Ø172 × 150 × 51 mm 9SG type



Model No.	Rated Voltage [V]	Rated Current [A]	Rated Speed [min ⁻¹]	Max. Airflow [m ³ /min] [CFM]	Max. Static Pressure [Pa] [inchH ₂ O]	SPL [dB (A)]
9SG5724P5H61	24	2.8	6500	11.6 410	540 2.16	71
9SG5748P5G01	48	2.91	8600	15.46 546	1000 4.02	78



Ø172 × 150 × 51 mm 9E type



Model No.	Rated Voltage [V]	Rated Current [A]	Rated Speed [min ⁻¹]	Max. Airflow [m ³ /min] [CFM]	Max. Static Pressure [Pa] [inchH ₂ O]	SPL [dB (A)]
109E5712K501	12	2.9	4100	8.5 300	243.0 0.976	60
109E5724C501	24	2.3	4800	9.9 350	308.0 1.237	66
109E5748C501	48	1.2	4800	9.9 350	308.0 1.237	66



Ø172 × 51 mm 9E type



Model No.	Rated Voltage [V]	Rated Current [A]	Rated Speed [min ⁻¹]	Max. Airflow [m ³ /min] [CFM]	Max. Static Pressure [Pa] [inchH ₂ O]	SPL [dB (A)]
109E1712K501	12	2.9	4100	8.5 300	243.0 0.976	55
109E1724C501	24	2.3	4800	9.9 350	308.0 1.237	60
109E1748C501	48	1.2	4800	9.9 350	308.0 1.237	60



Ø200 × 70 mm 9GV type



Model No.	Rated Voltage [V]	Rated Current [A]	Rated Speed [min ⁻¹]	Max. Airflow [m ³ /min] [CFM]	Max. Static Pressure [Pa] [inchH ₂ O]	SPL [dB (A)]
9GV2048P0G201	48	12.5	8000	31.5 1112	1400 5.62	81



Ø200 × 70 mm 9EC type



Model No.	Rated Voltage [V]	Rated Current [A]	Rated Speed [min ⁻¹]	Max. Airflow [m ³ /min] [CFM]	Max. Static Pressure [Pa] [inchH ₂ O]	SPL [dB (A)]
9EC2024H001	24	2.0	3600	11.0 388	360 1.446	60
9EC2048A001	48	2.2	4800	14.7 519	640 2.57	68

Counter Rotating Fan



38 × 38 × 48 mm 9CRA type



Model No.	Rated Voltage [V]	Rated Current [A]	Rated Speed [min ⁻¹]		Max. Airflow [m ³ /min] [CFM]	Max. Static Pressure [Pa] [inchH ₂ O]	SPL [dB (A)]
			Inlet	Outlet			
9CRA0312P4K03	12	1.5	17600	14520	0.77 27.2	700.0 2.81	64



40 × 40 × 48 mm 9CRA type



Model No.	Rated Voltage [V]	Rated Current [A]	Rated Speed [min ⁻¹]		Max. Airflow [m ³ /min] [CFM]	Max. Static Pressure [Pa] [inchH ₂ O]	SPL [dB (A)]
			Inlet	Outlet			
9CRA0412P4K03	12	1.6	17500	11700	0.92 32.5	650.0 2.61	64



40 × 40 × 56 mm 9CRJ type



Model No.	Rated Voltage [V]	Rated Current [A]	Rated Speed [min ⁻¹]		Max. Airflow [m ³ /min] [CFM]	Max. Static Pressure [Pa] [inchH ₂ O]	SPL [dB (A)]
			Inlet	Outlet			
9CRJ0412P5J001	12	3.1	36200	32000	1.06 37.4	2400 9.64	72



40 × 40 × 56 mm 9CRH type



Model No.	Rated Voltage [V]	Rated Current [A]	Rated Speed [min ⁻¹]		Max. Airflow [m ³ /min] [CFM]	Max. Static Pressure [Pa] [inchH ₂ O]	SPL [dB (A)]
			Inlet	Outlet			
9CRH0412P5J001	12	2.52	29500	25500	0.93 32.9	1700 6.83	70



40 × 40 × 56 mm 9CRV type



Model No.	Rated Voltage [V]	Rated Current [A]	Rated Speed [min ⁻¹]		Max. Airflow [m ³ /min] [CFM]	Max. Static Pressure [Pa] [inchH ₂ O]	SPL [dB (A)]
			Inlet	Outlet			
9CRV0412P5J201	12	1.8	22500	20000	0.9 31.8	1050 4.22	68

Low Vibration Fan



40 × 40 × 56 mm 9CRE type



Model No.	Rated Voltage [V]	Rated Current [A]	Rated Speed [min ⁻¹]		Max. Airflow [m ³ /min] [CFM]	Max. Static Pressure [Pa] [inchH ₂ O]	SPL [dB (A)]
			Inlet	Outlet			
9CRE0412P5J03	12	1.4	15800	12200	0.9 31.8	570.0 2.29	62



60 × 60 × 51 mm 9CR type



Model No.	Rated Voltage [V]	Rated Current [A]	Rated Speed [min ⁻¹]		Max. Airflow [m ³ /min] [CFM]	Max. Static Pressure [Pa] [inchH ₂ O]	SPL [dB (A)]
			Inlet	Outlet			
9CR0612P5G03	12	2.7	11500	9000	2.03 71.7	600 2.41	68

Counter Rotating Fan



60 × 60 × 56 mm 9CRA type



Model No.	Rated Voltage [V]	Rated Current [A]	Rated Speed [min ⁻¹]		Max. Airflow		Max. Static Pressure		SPL [dB (A)]
			Inlet	Outlet	[m ³ /min]	[CFM]	[Pa]	[inchH ₂ O]	
9CRA0612P6K001	12	3.1	18300	15800	2.28	80.5	1130	4.54	73



Low Vibration Fan

60 × 60 × 76 mm 9CRE type



Model No.	Rated Voltage [V]	Rated Current [A]	Rated Speed [min ⁻¹]		Max. Airflow		Max. Static Pressure		SPL [dB (A)]
			Inlet	Outlet	[m ³ /min]	[CFM]	[Pa]	[inchH ₂ O]	
9CRE0612P0G001	12	2.3	16500	13000	2.0	70.6	1000	4.0	66



60 × 60 × 76 mm 9CRA type



Model No.	Rated Voltage [V]	Rated Current [A]	Rated Speed [min ⁻¹]		Max. Airflow		Max. Static Pressure		SPL [dB (A)]
			Inlet	Outlet	[m ³ /min]	[CFM]	[Pa]	[inchH ₂ O]	
9CRA0612P0G001	12	2.3	16500	13000	2.0	70.6	1000	4.0	66



80 × 80 × 80 mm 9CRB type



Model No.	Rated Voltage [V]	Rated Current [A]	Rated Speed [min ⁻¹]		Max. Airflow		Max. Static Pressure		SPL [dB (A)]
			Inlet	Outlet	[m ³ /min]	[CFM]	[Pa]	[inchH ₂ O]	
9CRB0812P8G001	12	9.2	14600	12200	5.5	194	1150	4.6	80



Low Vibration Fan

80 × 80 × 80 mm 9CRE type



Model No.	Rated Voltage [V]	Rated Current [A]	Rated Speed [min ⁻¹]		Max. Airflow		Max. Static Pressure		SPL [dB (A)]
			Inlet	Outlet	[m ³ /min]	[CFM]	[Pa]	[inchH ₂ O]	
9CRE0812P8G001	12	5.3	12000	11300	4.5	158.9	1150	4.62	76



80 × 80 × 80 mm 9CRA type



Model No.	Rated Voltage [V]	Rated Current [A]	Rated Speed [min ⁻¹]		Max. Airflow		Max. Static Pressure		SPL [dB (A)]
			Inlet	Outlet	[m ³ /min]	[CFM]	[Pa]	[inchH ₂ O]	
9CRA0812P8G001	12	5.3	12000	11300	4.5	158.9	1150	4.62	76
9CRA0824P8G001	24	2.65	12000	11300	4.5	158.9	1150	4.62	76
9CRA0848P8G001	48	1.32	12000	11300	4.5	158.9	1150	4.62	76

**92 × 92 × 76 mm 9CRA type**

Model No.	Rated Voltage [V]	Rated Current [A]	Rated Speed [min ⁻¹]		Max. Airflow		Max. Static Pressure		SPL [dB (A)]
			Inlet	Outlet	[m ³ /min]	[CFM]	[Pa]	[inchH ₂ O]	
9CRA0912P0G001	12	9.0	13300	12200	5.8	205	1650	6.63	81
9CRA0948P0G601	48	2.2	13300	12200	5.8	205	1650	6.63	81

**120 × 120 × 76 mm 9CR type**

Model No.	Rated Voltage [V]	Rated Current [A]	Rated Speed [min ⁻¹]		Max. Airflow		Max. Static Pressure		SPL [dB (A)]
			Inlet	Outlet	[m ³ /min]	[CFM]	[Pa]	[inchH ₂ O]	
9CR1212P0G03	12	7.2	6200	3800	8.5	300	480	1.93	70

**ø172 × 150 × 102 mm 9CR type**

Model No.	Rated Voltage [V]	Rated Current [A]	Rated Speed [min ⁻¹]		Max. Airflow		Max. Static Pressure		SPL [dB (A)]
			Inlet	Outlet	[m ³ /min]	[CFM]	[Pa]	[inchH ₂ O]	
9CR5748P9G001	48	5.5	7300	6400	18	636	1400	5.62	83

Reversible Flow Fan

**ø92 × 38 mm 9RF type**

Model No.	Rated Voltage [V]	Rated Current [A]	Rated Speed [min ⁻¹]		Max. Airflow		Max. Static Pressure		SPL [dB (A)]
			Inlet	Outlet	[m ³ /min]	[CFM]	[Pa]	[inchH ₂ O]	
9RF0912P1H001	12	0.17	5500		1.2	42.4	156	0.63	39
9RF0924P1H001	24	0.09	5500		1.2	42.4	156	0.63	39

Values for when air is flowing in the forward direction.

**ø136 × 28 mm 9RFA type**

Model No.	Rated Voltage [V]	Rated Current [A]	Rated Speed [min ⁻¹]		Max. Airflow		Max. Static Pressure		SPL [dB (A)]
			Inlet	Outlet	[m ³ /min]	[CFM]	[Pa]	[inchH ₂ O]	
9RFA1312P3G001	12	0.25	5450		2.10	74.2	285	1.14	49
9RFA1324P3G001	24	0.13	5450		2.10	74.2	285	1.14	49

Values for when air is flowing in the forward direction.

**ø136 × 28 mm 9RF type**

Model No.	Rated Voltage [V]	Rated Current [A]	Rated Speed [min ⁻¹]		Max. Airflow		Max. Static Pressure		SPL [dB (A)]
			Inlet	Outlet	[m ³ /min]	[CFM]	[Pa]	[inchH ₂ O]	
9RF1312P3H001	12	0.15	3100		2.0	70.7	102	0.41	35
9RF1324P3H001	24	0.09	3100		2.0	70.7	102	0.41	35

Values for when air is flowing in the forward direction.

Splash Proof Fan



40×40×20 mm 9WP type

IP68



Model No.	Rated Voltage [V]	Rated Current [A]	Rated Speed [min ⁻¹]	Max. Airflow [m ³ /min] [CFM]	Max. Static Pressure [Pa] [inchH ₂ O]	SPL [dB (A)]
9WP0412H6001	12	0.1	8000	0.255 8.0	65.7 0.264	33



40×40×28 mm 9WL type

IP68



Model No.	Rated Voltage [V]	Rated Current [A]	Rated Speed [min ⁻¹]	Max. Airflow [m ³ /min] [CFM]	Max. Static Pressure [Pa] [inchH ₂ O]	SPL [dB (A)]
9WL0412P3J001	12	0.52	17500	0.63 22.2	400 1.61	51
9WL0424P3J001	24	0.26	17500	0.63 22.2	400 1.61	51



60×60×25 mm 9WPA type

IP68



Model No.	Rated Voltage [V]	Rated Current [A]	Rated Speed [min ⁻¹]	Max. Airflow [m ³ /min] [CFM]	Max. Static Pressure [Pa] [inchH ₂ O]	SPL [dB (A)]
9WPA0612P4G001	12	0.93	12000	1.52 53.7	357 1.44	56
9WPA0624P4G001	24	0.46	12000	1.52 53.7	357 1.44	56



60×60×25 mm 9WL type

IP68



Model No.	Rated Voltage [V]	Rated Current [A]	Rated Speed [min ⁻¹]	Max. Airflow [m ³ /min] [CFM]	Max. Static Pressure [Pa] [inchH ₂ O]	SPL [dB (A)]
9WL0612P4S001	12	0.67	11000	1.4 49.4	300 1.204	53
9WL0624P4S001	24	0.34	11000	1.4 49.4	300 1.204	53



80×80×25 mm 9WPA type

IP68



Model No.	Rated Voltage [V]	Rated Current [A]	Rated Speed [min ⁻¹]	Max. Airflow [m ³ /min] [CFM]	Max. Static Pressure [Pa] [inchH ₂ O]	SPL [dB (A)]
9WPA0812P4G001	12	0.71	8250	2.32 81.9	210 0.84	54
9WPA0824P4G001	24	0.36	8250	2.32 81.9	210 0.84	54



80×80×25 mm 9WL type

IP68



Model No.	Rated Voltage [V]	Rated Current [A]	Rated Speed [min ⁻¹]	Max. Airflow [m ³ /min] [CFM]	Max. Static Pressure [Pa] [inchH ₂ O]	SPL [dB (A)]
9WL0812P4J001	12	0.6	7400	2.07 73.0	177 0.71	49
9WL0824P4J001	24	0.28	7400	2.07 73.0	177 0.71	49



80×80×38 mm 9WV type

IP68



Model No.	Rated Voltage [V]	Rated Current [A]	Rated Speed [min ⁻¹]	Max. Airflow [m ³ /min] [CFM]	Max. Static Pressure [Pa] [inchH ₂ O]	SPL [dB (A)]
9WV0812P1M001	12	0.75	6000	2.29 80.9	169 0.68	51
9WV0848P1H001	48	0.75	9700	3.7 131	440 1.77	63


92 × 92 × 25 mm 9WPA type
IP68

OPTION
 Ribless


Model No.	Rated Voltage [V]	Rated Current [A]	Rated Speed [min ⁻¹]	Max. Airflow [m ³ /min] [CFM]	Max. Static Pressure [Pa] [inchH ₂ O]	SPL [dB (A)]
9WPA0912P4G001	12	0.5	5700	2.45 86.5	126 0.51	47
9WPA0924P4G001	24	0.25	5700	2.45 86.5	126 0.51	47


92 × 92 × 25 mm 9WL type
IP68


Model No.	Rated Voltage [V]	Rated Current [A]	Rated Speed [min ⁻¹]	Max. Airflow [m ³ /min] [CFM]	Max. Static Pressure [Pa] [inchH ₂ O]	SPL [dB (A)]
9WL0912P4J001	12	0.42	5000	2.2 77.7	105 0.42	44
9WL0924P4J001	24	0.21	5000	2.2 77.7	105 0.42	44


92 × 92 × 38 mm 9WL type
IP68


Model No.	Rated Voltage [V]	Rated Current [A]	Rated Speed [min ⁻¹]	Max. Airflow [m ³ /min] [CFM]	Max. Static Pressure [Pa] [inchH ₂ O]	SPL [dB (A)]
9WL0912P1H001	12	1.9	9000	3.7 130.6	430 1.72	61
9WL0924P1H001	24	0.95	9000	3.7 130.6	430 1.72	61
9WL0948P1H601	48	0.48	9000	3.7 130.6	430 1.72	61


92 × 92 × 38 mm 9WV type
IP68


Model No.	Rated Voltage [V]	Rated Current [A]	Rated Speed [min ⁻¹]	Max. Airflow [m ³ /min] [CFM]	Max. Static Pressure [Pa] [inchH ₂ O]	SPL [dB (A)]
9WV0924P1H001	24	1.6	8500	5.05 178	385 1.55	64
9WV0948P1H001	48	0.82	8500	5.05 178	385 1.55	64


120 × 120 × 38 mm 9WV type
IP68


Model No.	Rated Voltage [V]	Rated Current [A]	Rated Speed [min ⁻¹]	Max. Airflow [m ³ /min] [CFM]	Max. Static Pressure [Pa] [inchH ₂ O]	SPL [dB (A)]
9WV1212P1J001	12	3	6400	6.35 224.0	360 1.45	64
9WV1224P1J601	24	1.5	6400	6.35 224.0	360 1.45	64
9WV1248P1J001	48	0.65	6400	6.35 224.0	360 1.45	64


120 × 120 × 38 mm 9WG type
IP55


Model No.	Rated Voltage [V]	Rated Current [A]	Rated Speed [min ⁻¹]	Max. Airflow [m ³ /min] [CFM]	Max. Static Pressure [Pa] [inchH ₂ O]	SPL [dB (A)]
9WG1212G101-E	12	0.98	3600	3.88 137	135 0.542	49
9WG1224G101-E	24	0.5	3600	3.88 137	135 0.542	49
9WG1248G101-E	48	0.25	3600	3.88 137	135 0.542	49

Splash Proof Fan



120 × 120 × 38 mm 9WP type

IP68



Model No.	Rated Voltage [V]	Rated Current [A]	Rated Speed [min ⁻¹]	Max. Airflow [m ³ /min] [CFM]	Max. Static Pressure [Pa] [inchH ₂ O]	SPL [dB (A)]
9WP1212H101	12	0.38	2600	2.8 99	70.4 0.283	39
9WP1224H101	24	0.22	2600	2.8 99	70.4 0.283	39
9WP1248H101	48	0.11	2600	2.8 99	70.4 0.283	39



140 × 140 × 38 mm 9WL type

IP68



Model No.	Rated Voltage [V]	Rated Current [A]	Rated Speed [min ⁻¹]	Max. Airflow [m ³ /min] [CFM]	Max. Static Pressure [Pa] [inchH ₂ O]	SPL [dB (A)]
9WL1412P1A001	12	3.72	6900	8.0 282	516 2.07	68
9WL1424P1A001	24	1.86	6900	8.0 282	516 2.07	68
9WL1448P1A001	48	0.92	6900	8.0 282	516 2.07	68



140 × 140 × 51 mm 9WL type

IP68



Model No.	Rated Voltage [V]	Rated Current [A]	Rated Speed [min ⁻¹]	Max. Airflow [m ³ /min] [CFM]	Max. Static Pressure [Pa] [inchH ₂ O]	SPL [dB (A)]
9WL1412P5G001	12	5.16	7500	9.0 318	655 2.63	69
9WL1424P5G001	24	2.58	7500	9.0 318	655 2.63	69
9WL1448P5G001	48	1.29	7500	9.0 318	655 2.63	69



172 × 150 × 51 mm 9WG type

IP68



Model No.	Rated Voltage [V]	Rated Current [A]	Rated Speed [min ⁻¹]	Max. Airflow [m ³ /min] [CFM]	Max. Static Pressure [Pa] [inchH ₂ O]	SPL [dB (A)]
9WG5748P5G001	48	2.91	8600	15.46 546	1000 4.02	78

Splash Proof Centrifugal Fan



ø100×25 mm 9W2TM type

IP68

PWM

Pulse sensor



Model No.	Rated Voltage [V]	Rated Current [A]	Rated Speed [min ⁻¹]	Max. Airflow [m ³ /min]	[CFM]	Max. Static Pressure [Pa]	[inchH ₂ O]	SPL [dB (A)]
9W2TM24P4G001	24	0.7	7400	2.03	71.7	708	2.84	65
9W2TM48P4G001	48	0.35	7400	2.03	71.7	708	2.84	65



ø100×25 mm 9W1TM type

IP54

PWM

Pulse sensor

Model No.	Rated Voltage [V]	Rated Current [A]	Rated Speed [min ⁻¹]	Max. Airflow [m ³ /min]	[CFM]	Max. Static Pressure [Pa]	[inchH ₂ O]	SPL [dB (A)]
9W1TM48P4G01	48	0.36	7400	2.03	71.7	708	2.84	65



ø133×91 mm 9W2TJ type

IP68

PWM

Pulse sensor



Model No.	Rated Voltage [V]	Rated Current [A]	Rated Speed [min ⁻¹]	Max. Airflow [m ³ /min]	[CFM]	Max. Static Pressure [Pa]	[inchH ₂ O]	SPL [dB (A)]
9W2TJ24P0H001	24	1.2	4150	6.39	225	395	1.59	61
9W2TJ48P0H001	48	0.55	4150	6.39	225	395	1.59	61



ø133×91 mm 9W1TJ type

IP54

PWM

Pulse sensor

Model No.	Rated Voltage [V]	Rated Current [A]	Rated Speed [min ⁻¹]	Max. Airflow [m ³ /min]	[CFM]	Max. Static Pressure [Pa]	[inchH ₂ O]	SPL [dB (A)]
9W1TJ24P0H61	24	1.2	4150	6.39	225	395	1.59	61
9W1TJ48P0H61	48	0.55	4150	6.39	225	395	1.59	61



ø150×35 mm 9W2TN type

IP68

PWM

Pulse sensor



Model No.	Rated Voltage [V]	Rated Current [A]	Rated Speed [min ⁻¹]	Max. Airflow [m ³ /min]	[CFM]	Max. Static Pressure [Pa]	[inchH ₂ O]	SPL [dB (A)]
9W2TN24P1H001	24	0.64	3800	3.83	135	390	1.57	59
9W2TN48P1H001	48	0.32	3800	3.83	135	390	1.57	59



ø150×35 mm 9W1TN type

IP54

PWM

Pulse sensor

Model No.	Rated Voltage [V]	Rated Current [A]	Rated Speed [min ⁻¹]	Max. Airflow [m ³ /min]	[CFM]	Max. Static Pressure [Pa]	[inchH ₂ O]	SPL [dB (A)]
9W1TN48P1H01	48	0.32	3800	3.83	135	390	1.57	59



ø175×69 mm 9W2TGA type

IP56

PWM

Pulse sensor



Model No.	Rated Voltage [V]	Rated Current [A]	Rated Speed [min ⁻¹]	Max. Airflow [m ³ /min]	[CFM]	Max. Static Pressure [Pa]	[inchH ₂ O]	SPL [dB (A)]
9W2TGA48P0G001	48	3.85	5700	17.3	611	1100	4.42	80

Splash Proof Centrifugal Fan



ø175×69 mm 9W1TG type

IP54 PWM Pulse sensor

Model No.	Rated Voltage [V]	Rated Current [A]	Rated Speed [min ⁻¹]	Max. Airflow [m ³ /min] [CFM]	Max. Static Pressure [Pa] [inchH ₂ O]	SPL [dB (A)]
9W1TG48P0H61	48	0.65	3100	9.0 318	360 1.44	64



ø221×71 mm 9W2TP type

IP56 PWM Pulse sensor



Model No.	Rated Voltage [V]	Rated Current [A]	Rated Speed [min ⁻¹]	Max. Airflow [m ³ /min] [CFM]	Max. Static Pressure [Pa] [inchH ₂ O]	SPL [dB (A)]
9W2TP24P0H001	24	3.35	3050	17.6 621	530 2.13	71.5
9W2TP48P0S001	48	2.3	3400	19.6 692	659 2.65	73.5



ø225×99 mm 9W2TS type

IP56 PWM Pulse sensor



Model No.	Rated Voltage [V]	Rated Current [A]	Rated Speed [min ⁻¹]	Max. Airflow [m ³ /min] [CFM]	Max. Static Pressure [Pa] [inchH ₂ O]	SPL [dB (A)]
9W2TS48P0S001	48	2.45	3000	23.5 830	635 2.55	72.0



270×270×99 mm 9B1W2TP type

IP56 PWM Pulse sensor

Model No.	Rated Voltage [V]	Rated Current [A]	Rated Speed [min ⁻¹]	Max. Airflow [m ³ /min] [CFM]	Max. Static Pressure [Pa] [inchH ₂ O]	SPL [dB (A)]
9B1W2TP24P0H001	24	3.35	3050	17.6 621	530 2.13	71.5
9B1W2TP48P0S001	48	2.3	3400	19.6 692	659 2.65	73.5



270×270×119 mm 9B1W2TS type

IP56 PWM Pulse sensor

Model No.	Rated Voltage [V]	Rated Current [A]	Rated Speed [min ⁻¹]	Max. Airflow [m ³ /min] [CFM]	Max. Static Pressure [Pa] [inchH ₂ O]	SPL [dB (A)]
9B1W2TS48P0S001	48	2.45	3000	23.5 830	635 2.55	72.0

Splash Proof Blower



97×33 mm 9W1BM type

IP68 PWM Pulse sensor



Model No.	Rated Voltage [V]	Rated Current [A]	Rated Speed [min ⁻¹]	Max. Airflow [m ³ /min] [CFM]	Max. Static Pressure [Pa] [inchH ₂ O]	SPL [dB (A)]
9W1BM12P2H001	12	1.3	4800	1.09 38.5	540 2.17	58
9W1BM24P2H001	24	0.65	4800	1.09 38.5	540 2.17	58

Oil Proof Fan



40×40×15 mm 9WF type



Model No.	Rated Voltage	Rated Current	Rated Speed	Max. Airflow		Max. Static Pressure		SPL
	[V]	[A]	[min ⁻¹]	[m ³ /min]	[CFM]	[Pa]	[inchH ₂ O]	[dB (A)]
9WF0424H701	24	0.085	11300	0.195	6.9	80	0.32	38



40×40×20 mm 9WFA type



Model No.	Rated Voltage	Rated Current	Rated Speed	Max. Airflow		Max. Static Pressure		SPL
	[V]	[A]	[min ⁻¹]	[m ³ /min]	[CFM]	[Pa]	[inchH ₂ O]	[dB (A)]
9WFA0424G6001	24	0.11	17000	0.31	10.9	170	0.68	48



60×60×15 mm 9WF type



Model No.	Rated Voltage	Rated Current	Rated Speed	Max. Airflow		Max. Static Pressure		SPL
	[V]	[A]	[min ⁻¹]	[m ³ /min]	[CFM]	[Pa]	[inchH ₂ O]	[dB (A)]
9WF0624H701	24	0.12	6800	0.52	18.3	95	0.38	44



60×60×20 mm 9WFA type



Model No.	Rated Voltage	Rated Current	Rated Speed	Max. Airflow		Max. Static Pressure		SPL
	[V]	[A]	[min ⁻¹]	[m ³ /min]	[CFM]	[Pa]	[inchH ₂ O]	[dB (A)]
9WFA0624G6001	24	0.16	7700	0.79	27.9	158	0.63	48



60×60×25 mm 9WF type



Model No.	Rated Voltage	Rated Current	Rated Speed	Max. Airflow		Max. Static Pressure		SPL
	[V]	[A]	[min ⁻¹]	[m ³ /min]	[CFM]	[Pa]	[inchH ₂ O]	[dB (A)]
9WF0624H401	24	0.15	6500	0.67	23.6	97	0.38	41



80×80×20 mm 9WFA type



Model No.	Rated Voltage	Rated Current	Rated Speed	Max. Airflow		Max. Static Pressure		SPL
	[V]	[A]	[min ⁻¹]	[m ³ /min]	[CFM]	[Pa]	[inchH ₂ O]	[dB (A)]
9WFA0824G6001	24	0.15	6000	1.44	50.8	105	0.42	48



80×80×25 mm 9WF type



Model No.	Rated Voltage	Rated Current	Rated Speed	Max. Airflow		Max. Static Pressure		SPL
	[V]	[A]	[min ⁻¹]	[m ³ /min]	[CFM]	[Pa]	[inchH ₂ O]	[dB (A)]
9WF0824S401	24	0.16	4000	1.2	42.4	58	0.23	38

Oil Proof Fan



92×92×25 mm 9WFA type



Model No.	Rated Voltage	Rated Current	Rated Speed [min ⁻¹]	Max. Airflow		Max. Static Pressure		SPL [dB (A)]
	[V]	[A]		[m ³ /min]	[CFM]	[Pa]	[inchH ₂ O]	
9WFA0924G4001	24	0.45	7350	2.85	100.6	250	1.0	56



92×92×32 mm 9WFA type



Model No.	Rated Voltage	Rated Current	Rated Speed [min ⁻¹]	Max. Airflow		Max. Static Pressure		SPL [dB (A)]
	[V]	[A]		[m ³ /min]	[CFM]	[Pa]	[inchH ₂ O]	
9WFA0924G2001	24	0.58	9600	3.1	109.5	380	1.53	63



120×120×38 mm 9WF type



Model No.	Rated Voltage	Rated Current	Rated Speed [min ⁻¹]	Max. Airflow		Max. Static Pressure		SPL [dB (A)]
	[V]	[A]		[m ³ /min]	[CFM]	[Pa]	[inchH ₂ O]	
9WF1224H101	24	0.32	3100	3.34	118	100	0.4	46

Long Life Fan



40×40×28 mm 9L type



Model No.	Rated Voltage [V]	Rated Current [A]	Rated Speed [min ⁻¹]	Max. Airflow [m ³ /min] [CFM]	Max. Static Pressure [Pa] [inchH ₂ O]	SPL [dB (A)]
9L0412J301	12	0.31	11700	0.52 18.4	206 0.827	48



60×60×25 mm 9LG type



Model No.	Rated Voltage [V]	Rated Current [A]	Rated Speed [min ⁻¹]	Max. Airflow [m ³ /min] [CFM]	Max. Static Pressure [Pa] [inchH ₂ O]	SPL [dB (A)]
9LG0612P4S001	12	0.67	11000	1.4 49.4	300 1.204	53
9LG0624P4S001	24	0.34	11000	1.4 49.4	300 1.204	53
9LG0648P4S001	48	0.18	11000	1.4 49.4	305 1.224	53



60×60×76 mm 9CRLA type



Model No.	Rated Voltage [V]	Rated Current [A]	Rated Speed [min ⁻¹]	Max. Airflow [m ³ /min] [CFM]	Max. Static Pressure [Pa] [inchH ₂ O]	SPL [dB (A)]
			Inlet Outlet			
9CRLA0612P0G001	12	3.0	16500 17800	2.1 74.1	1400 5.62	70



80×80×25 mm 9LG type



Model No.	Rated Voltage [V]	Rated Current [A]	Rated Speed [min ⁻¹]	Max. Airflow [m ³ /min] [CFM]	Max. Static Pressure [Pa] [inchH ₂ O]	SPL [dB (A)]
9LG0812P4J001	12	0.6	7400	2.07 73.0	177 0.71	49
9LG0824P4J001	24	0.28	7400	2.07 73.0	177 0.71	49



80×80×80 mm 9CRL type



Model No.	Rated Voltage [V]	Rated Current [A]	Rated Speed [min ⁻¹]	Max. Airflow [m ³ /min] [CFM]	Max. Static Pressure [Pa] [inchH ₂ O]	SPL [dB (A)]
			Inlet Outlet			
9CRL0812P8G001	12	5.3	12000 11300	4.5 158.9	1150 4.62	76



92×92×25 mm 9LG type



Model No.	Rated Voltage [V]	Rated Current [A]	Rated Speed [min ⁻¹]	Max. Airflow [m ³ /min] [CFM]	Max. Static Pressure [Pa] [inchH ₂ O]	SPL [dB (A)]
9LG0912P4J001	12	0.42	5000	2.2 77.7	105 0.42	44
9LG0924P4J001	24	0.21	5000	2.2 77.7	105 0.42	44



92×92×38 mm 9LG type



Model No.	Rated Voltage [V]	Rated Current [A]	Rated Speed [min ⁻¹]	Max. Airflow [m ³ /min] [CFM]	Max. Static Pressure [Pa] [inchH ₂ O]	SPL [dB (A)]
9LG0912P1H001	12	2.0	9000	3.7 130.6	430 1.72	61
9LG0924P1H001	24	0.9	9000	3.7 130.6	430 1.72	61

Long Life Fan



120 × 120 × 38 mm 9LG type



Model No.	Rated Voltage [V]	Rated Current [A]	Rated Speed [min ⁻¹]	Max. Airflow		Max. Static Pressure		SPL
				[m ³ /min]	[CFM]	[Pa]	[inchH ₂ O]	[dB (A)]
9GL1212P1G001	12	3.2	6550	7.0	247.1	370	1.48	62
9GL1224P1G001	24	1.6	6550	7.0	247.1	370	1.48	62
9GL1248P1G001	48	0.8	6550	7.0	247.1	370	1.48	62



120 × 120 × 38 mm 9GL type



Model No.	Rated Voltage [V]	Rated Current [A]	Rated Speed [min ⁻¹]	Max. Airflow		Max. Static Pressure		SPL
				[m ³ /min]	[CFM]	[Pa]	[inchH ₂ O]	[dB (A)]
9GL1212G101	12	0.98	3600	3.88	137	135	0.542	49
9GL1224G101	24	0.5	3600	3.88	137	135	0.542	49
9GL1248G101	48	0.25	3600	3.88	137	135	0.542	49



140 × 140 × 38 mm 9LG type



Model No.	Rated Voltage [V]	Rated Current [A]	Rated Speed [min ⁻¹]	Max. Airflow		Max. Static Pressure		SPL
				[m ³ /min]	[CFM]	[Pa]	[inchH ₂ O]	[dB (A)]
9GL1412P1A001	12	3.72	6900	8.0	282	516	2.07	68
9GL1424P1A001	24	1.86	6900	8.0	282	516	2.07	68
9GL1448P1A001	48	0.92	6900	8.0	282	516	2.07	68



140 × 140 × 51 mm 9LG type



Model No.	Rated Voltage [V]	Rated Current [A]	Rated Speed [min ⁻¹]	Max. Airflow		Max. Static Pressure		SPL
				[m ³ /min]	[CFM]	[Pa]	[inchH ₂ O]	[dB (A)]
9GL1412P5G001	12	5.16	7500	9.0	318	655	2.63	69
9GL1424P5G001	24	2.58	7500	9.0	318	655	2.63	69
9GL1448P5G001	48	1.29	7500	9.0	318	655	2.63	69



172 × 150 × 51 mm 9L type



Model No.	Rated Voltage [V]	Rated Current [A]	Rated Speed [min ⁻¹]	Max. Airflow		Max. Static Pressure		SPL
				[m ³ /min]	[CFM]	[Pa]	[inchH ₂ O]	[dB (A)]
109L5712H501	12	1.2	3050	6.4	226	137.2	0.551	52
109L5724H501	24	0.58	3050	6.4	226	137.2	0.551	52
109L5748H501	48	0.28	3050	6.4	226	137.2	0.551	52



172 × 51 mm 9L type



Model No.	Rated Voltage [V]	Rated Current [A]	Rated Speed [min ⁻¹]	Max. Airflow		Max. Static Pressure		SPL
				[m ³ /min]	[CFM]	[Pa]	[inchH ₂ O]	[dB (A)]
109L1712H501	12	1.2	3050	6.4	226	137.2	0.551	47
109L1724H501	24	0.58	3050	6.4	226	137.2	0.551	47
109L1748H501	48	0.28	3050	6.4	226	137.2	0.551	47



Wide Temperature Range Fan



40×40×28 mm 9GT type



Model No.	Rated Voltage [V]	Rated Current [A]	Rated Speed [min ⁻¹]	Max. Airflow [m ³ /min] [CFM]	Max. Static Pressure [Pa] [inchH ₂ O]	SPL [dB (A)]
9GT0412P3J001	12	0.31	11700	0.52 18.4	206 0.827	48
9GT0424P3J001	24	0.15	11700	0.52 18.4	206 0.827	48



60×60×25 mm 9GT type



Model No.	Rated Voltage [V]	Rated Current [A]	Rated Speed [min ⁻¹]	Max. Airflow [m ³ /min] [CFM]	Max. Static Pressure [Pa] [inchH ₂ O]	SPL [dB (A)]
9GT0612P4G001	12	0.56	10000	1.26 44.5	243 0.97	52
9GT0624P4G001	24	0.28	10000	1.26 44.5	243 0.97	52



80×80×25 mm 9GT type



Model No.	Rated Voltage [V]	Rated Current [A]	Rated Speed [min ⁻¹]	Max. Airflow [m ³ /min] [CFM]	Max. Static Pressure [Pa] [inchH ₂ O]	SPL [dB (A)]
9GT0812P4S001	12	0.46	6700	1.86 65.7	143 0.57	46
9GT0824P4S001	24	0.22	6700	1.86 65.7	143 0.57	46



92×92×25 mm 9GT type



Model No.	Rated Voltage [V]	Rated Current [A]	Rated Speed [min ⁻¹]	Max. Airflow [m ³ /min] [CFM]	Max. Static Pressure [Pa] [inchH ₂ O]	SPL [dB (A)]
9GT0912P4J001	12	0.42	5000	2.2 77.7	105 0.42	44
9GT0924P4J001	24	0.21	5000	2.2 77.7	105 0.42	44



92×92×38 mm 9GT type



Model No.	Rated Voltage [V]	Rated Current [A]	Rated Speed [min ⁻¹]	Max. Airflow [m ³ /min] [CFM]	Max. Static Pressure [Pa] [inchH ₂ O]	SPL [dB (A)]
9GT0912P1M001	12	1.5	8100	3.3 116.6	315 1.26	58
9GT0924P1M001	24	0.75	8100	3.3 116.6	315 1.26	58



120×120×38 mm 9GT type



Model No.	Rated Voltage [V]	Rated Current [A]	Rated Speed [min ⁻¹]	Max. Airflow [m ³ /min] [CFM]	Max. Static Pressure [Pa] [inchH ₂ O]	SPL [dB (A)]
9GT1212P1S001	12	2.2	5600	6.0 211.8	270 1.08	58
9GT1224P1S001	24	1.1	5600	6.0 211.8	270 1.08	58

G Proof Fan



120 × 120 × 38 mm GGP type



Model No.	Rated Voltage [V]	Rated Current [A]	Rated Speed [min ⁻¹]	Max. Airflow [m ³ /min] [CFM]	Max. Static Pressure [Pa] [inchH ₂ O]	SPL [dB (A)]
9GP1224P1G001	24	1.6	6550	7.0 247	370 1.48	62
9GP1248P1G001	48	0.8	6550	7.0 247	370 1.48	62



172 × 150 × 51 mm GGP type



Model No.	Rated Voltage [V]	Rated Current [A]	Rated Speed [min ⁻¹]	Max. Airflow [m ³ /min] [CFM]	Max. Static Pressure [Pa] [inchH ₂ O]	SPL [dB (A)]
9GP5724P5H001	24	5.0	8000	12.3 434	1000 4.02	77
9GP5748P5G001	48	5.0	10500	16.1 568	1600 6.43	83

Centrifugal Fan



70 × 20 mm 9TD type



Model No.	Rated Voltage [V]	Rated Current [A]	Rated Speed [min ⁻¹]	Max. Airflow [m ³ /min] [CFM]	Max. Static Pressure [Pa] [inchH ₂ O]	SPL [dB (A)]
9TD12P6G001	12	1.0	9200	1.13 39.9	560 2.24	61



100 × 25 mm 9TM type



Model No.	Rated Voltage [V]	Rated Current [A]	Rated Speed [min ⁻¹]	Max. Airflow [m ³ /min] [CFM]	Max. Static Pressure [Pa] [inchH ₂ O]	SPL [dB (A)]
9TM24P4H01	24	0.44	6400	1.77 62.5	560 2.25	60
9TM48P4H01	48	0.22	6400	1.77 62.5	560 2.25	60



133 × 91 mm 9TJ type



Model No.	Rated Voltage [V]	Rated Current [A]	Rated Speed [min ⁻¹]	Max. Airflow [m ³ /min] [CFM]	Max. Static Pressure [Pa] [inchH ₂ O]	SPL [dB (A)]
9TJ24P0H61	24	1.2	4150	6.39 226	395 1.59	61
9TJ48P0H01	48	0.55	4150	6.39 226	395 1.59	61



150 × 35 mm 9TN type



Model No.	Rated Voltage [V]	Rated Current [A]	Rated Speed [min ⁻¹]	Max. Airflow [m ³ /min] [CFM]	Max. Static Pressure [Pa] [inchH ₂ O]	SPL [dB (A)]
9TN24P1H01	24	0.62	3800	3.83 135	410 1.65	59
9TN48P1H01	48	0.32	3800	3.83 135	390 1.57	59

Centrifugal Fan



Ø175×69 mm 9TGA type



Model No.	Rated Voltage	Rated Current	Rated Speed	Max. Airflow		Max. Static Pressure		SPL
	[V]	[A]	[min ⁻¹]	[m ³ /min]	[CFM]	[Pa]	[inchH ₂ O]	[dB (A)]
9TGA24P0H001	24	4.8	4950	15.3	541	830	3.33	77
9TGA48P0G001	48	3.5	5700	17.6	622	1100	4.42	80



Ø175×69 mm 9TG type



Model No.	Rated Voltage	Rated Current	Rated Speed	Max. Airflow		Max. Static Pressure		SPL
	[V]	[A]	[min ⁻¹]	[m ³ /min]	[CFM]	[Pa]	[inchH ₂ O]	[dB (A)]
9TG24P0G001	24	3.9	4700	14.0	494.7	885	3.55	73
9TG48P0G001	48	1.95	4700	14.0	494.7	885	3.55	73



Ø221×71 mm 9TP type



Model No.	Rated Voltage	Rated Current	Rated Speed	Max. Airflow		Max. Static Pressure		SPL
	[V]	[A]	[min ⁻¹]	[m ³ /min]	[CFM]	[Pa]	[inchH ₂ O]	[dB (A)]
9TP24P0H001	24	3.2	3050	17.6	622	530	2.13	71
9TP48P0G001	48	2.75	3650	21	742	760	3.05	74



Ø225×99 mm 9TS type



Model No.	Rated Voltage	Rated Current	Rated Speed	Max. Airflow		Max. Static Pressure		SPL
	[V]	[A]	[min ⁻¹]	[m ³ /min]	[CFM]	[Pa]	[inchH ₂ O]	[dB (A)]
9TS48P0G001	48	3.65	3550	28.1	992	861	3.46	74.5



270×270×99 mm 9B1TP type



Model No.	Rated Voltage	Rated Current	Rated Speed	Max. Airflow		Max. Static Pressure		SPL
	[V]	[A]	[min ⁻¹]	[m ³ /min]	[CFM]	[Pa]	[inchH ₂ O]	[dB (A)]
9B1TP24P0H001	24	3.2	3050	17.6	622	530	2.13	71
9B1TP48P0G001	48	2.75	3650	21.0	742	760	3.05	74



270×270×119 mm 9B1TS type



Model No.	Rated Voltage	Rated Current	Rated Speed	Max. Airflow		Max. Static Pressure		SPL
	[V]	[A]	[min ⁻¹]	[m ³ /min]	[CFM]	[Pa]	[inchH ₂ O]	[dB (A)]
9B1TS48P0G001	48	3.65	3550	28.1	992	861	3.46	74.5


52 × 15 mm 9BC type


Model No.	Rated Voltage	Rated Current	Rated Speed	Max. Airflow		Max. Static Pressure		SPL
	[V]	[A]	[min ⁻¹]	[m ³ /min]	[CFM]	[Pa]	[inchH ₂ O]	[dB (A)]
109BC12GC7-1	12	0.12	6200	0.125	4.4	215	0.86	43
109BC24GC7-1	24	0.07	6200	0.125	4.4	215	0.86	43


76 × 20 mm 9BD type


Model No.	Rated Voltage	Rated Current	Rated Speed	Max. Airflow		Max. Static Pressure		SPL
	[V]	[A]	[min ⁻¹]	[m ³ /min]	[CFM]	[Pa]	[inchH ₂ O]	[dB (A)]
9BD12SC6-1	12	0.28	4500	0.29	10.2	300	1.2	43
9BD24SC6-1	24	0.14	4500	0.29	10.2	300	1.2	43


76 × 30 mm 9BD type


Model No.	Rated Voltage	Rated Current	Rated Speed	Max. Airflow		Max. Static Pressure		SPL
	[V]	[A]	[min ⁻¹]	[m ³ /min]	[CFM]	[Pa]	[inchH ₂ O]	[dB (A)]
109BD12HC2	12	0.37	3000	0.36	12.7	151.9	0.61	41.5
109BD24HC2	24	0.17	3000	0.36	12.7	151.9	0.61	41.5


97 × 33 mm 9BMC type


Model No.	Rated Voltage	Rated Current	Rated Speed	Max. Airflow		Max. Static Pressure		SPL
	[V]	[A]	[min ⁻¹]	[m ³ /min]	[CFM]	[Pa]	[inchH ₂ O]	[dB (A)]
9BMC12P2G001	12	6.2	8200	1.85	65.3	1950	7.83	69
9BMC24P2G001	24	3.1	8200	1.85	65.3	1950	7.83	69


97 × 33 mm 9BMB type


Model No.	Rated Voltage	Rated Current	Rated Speed	Max. Airflow		Max. Static Pressure		SPL
	[V]	[A]	[min ⁻¹]	[m ³ /min]	[CFM]	[Pa]	[inchH ₂ O]	[dB (A)]
9BMB12P2K01	12	3.4	6850	1.61	56.8	1280	5.14	66
9BMB24P2K01	24	1.62	6850	1.61	56.8	1280	5.14	66


97 × 33 mm 9BM type


Model No.	Rated Voltage	Rated Current	Rated Speed	Max. Airflow		Max. Static Pressure		SPL
	[V]	[A]	[min ⁻¹]	[m ³ /min]	[CFM]	[Pa]	[inchH ₂ O]	[dB (A)]
109BM12GC2-1	12	0.6	3800	0.82	28.9	281	1.129	51.5
109BM24GC2-1	24	0.31	3800	0.82	28.9	281	1.129	51.5

**120 × 32 mm 9BFB type**

Model No.	Rated Voltage	Rated Current	Rated Speed	Max. Airflow		Max. Static Pressure		SPL
	[V]	[A]	[min ⁻¹]	[m ³ /min]	[CFM]	[Pa]	[inchH ₂ O]	[dB (A)]
9BFB12P2H003	12	2.3	3750	1.6	56.5	1250	5.02	62
9BFB24P2H003	24	1.1	3750	1.6	56.5	1250	5.02	62

**127 × 32 mm 9BJ type**

Model No.	Rated Voltage	Rated Current	Rated Speed	Max. Airflow		Max. Static Pressure		SPL
	[V]	[A]	[min ⁻¹]	[m ³ /min]	[CFM]	[Pa]	[inchH ₂ O]	[dB (A)]
109BJ12HC2	12	0.52	2400	0.78	27.5	205.8	0.826	46
109BJ24HC2	24	0.26	2400	0.78	27.5	205.8	0.826	46

**160 × 40 mm 9BG type**

Model No.	Rated Voltage	Rated Current	Rated Speed	Max. Airflow		Max. Static Pressure		SPL
	[V]	[A]	[min ⁻¹]	[m ³ /min]	[CFM]	[Pa]	[inchH ₂ O]	[dB (A)]
109BG12HC1	12	1.3	2300	1.62	57.2	313.6	1.259	55
109BG24HC1	24	0.62	2300	1.62	57.2	313.6	1.259	55

ACDC Fan



92 × 92 × 38 mm 9AD type



Model No.	Rated Voltage [V]	Rated Input [W]	Rated Speed [min ⁻¹]	Max. Airflow [m ³ /min] [CFM]	Max. Static Pressure [Pa] [inchH ₂ O]	SPL [dB (A)]
9AD0901H12	100 to 240	4.5	3850	1.5 53.0	90 0.36	40



120 × 120 × 38 mm 9AD type



Model No.	Rated Voltage [V]	Rated Input [W]	Rated Speed [min ⁻¹]	Max. Airflow [m ³ /min] [CFM]	Max. Static Pressure [Pa] [inchH ₂ O]	SPL [dB (A)]
9AD1201H12	100 to 240	4.4	3250	3.0 106	84 0.34	42



ø172 × 150 × 51 mm 9AD type



Lead wire model

Model No.	Rated Voltage [V]	Rated Input [W]	Rated Speed [min ⁻¹]	Max. Airflow [m ³ /min] [CFM]	Max. Static Pressure [Pa] [inchH ₂ O]	SPL [dB (A)]
9AD5701P5H003	100 to 240	17	3800	6.7 236	195 0.78	54

Terminal model

Model No.	Rated Voltage [V]	Rated Input [W]	Rated Speed [min ⁻¹]	Max. Airflow [m ³ /min] [CFM]	Max. Static Pressure [Pa] [inchH ₂ O]	SPL [dB (A)]
9AD5701P5HT03	100 to 240	17	3800	6.7 236	195 0.78	54



ø172 × 150 × 51 mm 9ADW type



Lead wire model

Model No.	Rated Voltage [V]	Rated Input [W]	Rated Speed [min ⁻¹]	Max. Airflow [m ³ /min] [CFM]	Max. Static Pressure [Pa] [inchH ₂ O]	SPL [dB (A)]
9ADW5701P5H003	100 to 240	17	3800	6.7 236	195 0.78	54

Terminal model

Model No.	Rated Voltage [V]	Rated Input [W]	Rated Speed [min ⁻¹]	Max. Airflow [m ³ /min] [CFM]	Max. Static Pressure [Pa] [inchH ₂ O]	SPL [dB (A)]
9ADW5701P5HT03	100 to 240	17	3800	6.7 236	195 0.78	54



ø190 × 88 mm 9ADTU type



Model No.	Rated Voltage [V]	Rated Input [W]	Rated Speed [min ⁻¹]	Max. Airflow [m ³ /min] [CFM]	Max. Static Pressure [Pa] [inchH ₂ O]	SPL [dB (A)]
9ADTU11P0G001	115	150	4800	16.5 583	1200 4.82	72
9ADTU23P0G001	230	150	4800	16.5 583	1200 4.82	72



ø190 × 88 mm 9ADW1TU type



Model No.	Rated Voltage [V]	Rated Input [W]	Rated Speed [min ⁻¹]	Max. Airflow [m ³ /min] [CFM]	Max. Static Pressure [Pa] [inchH ₂ O]	SPL [dB (A)]
9ADW1TU11P0G001	115	150	4800	16.5 583	1200 4.82	72
9ADW1TU23P0G001	230	150	4800	16.5 583	1200 4.82	72

**∅225×99 mm 9ADTS type**

Model No.	Rated Voltage [V]	Rated Input [W]	Rated Speed [min ⁻¹]	Max. Airflow [m ³ /min] [CFM]	Max. Static Pressure [Pa] [inchH ₂ O]	SPL [dB (A)]
9ADTS11P0G001	115	155	3200	23.0 812	815 3.27	74
9ADTS23P0G001	230	155	3200	23.0 812	815 3.27	74

**∅225×99 mm 9ADW1TS type**

Model No.	Rated Voltage [V]	Rated Input [W]	Rated Speed [min ⁻¹]	Max. Airflow [m ³ /min] [CFM]	Max. Static Pressure [Pa] [inchH ₂ O]	SPL [dB (A)]
9ADW1TS11P0H001	115	140	3100	22.3 787	760 3.05	73
9ADW1TS23P0H001	230	140	3100	22.3 787	760 3.05	73

**∅250×99 mm 9ADTV type**

Model No.	Rated Voltage [V]	Rated Input [W]	Rated Speed [min ⁻¹]	Max. Airflow [m ³ /min] [CFM]	Max. Static Pressure [Pa] [inchH ₂ O]	SPL [dB (A)]
9ADTV11P0G001	115	140	2700	26.5 936	650 2.61	71
9ADTV23P0G001	230	140	2700	26.5 936	650 2.61	71

**∅250×99 mm 9ADW1TV type**

Model No.	Rated Voltage [V]	Rated Input [W]	Rated Speed [min ⁻¹]	Max. Airflow [m ³ /min] [CFM]	Max. Static Pressure [Pa] [inchH ₂ O]	SPL [dB (A)]
9ADW1TV11P0G001	115	140	2700	26.5 936	650 2.61	71
9ADW1TV23P0G001	230	140	2700	26.5 936	650 2.61	71

**270×270×119 mm 9ADB1TS type**

Model No.	Rated Voltage [V]	Rated Input [W]	Rated Speed [min ⁻¹]	Max. Airflow [m ³ /min] [CFM]	Max. Static Pressure [Pa] [inchH ₂ O]	SPL [dB (A)]
9ADB1TS11P0G001	115	155	3200	23.0 812	815 3.27	74
9ADB1TS23P0G001	230	155	3200	23.0 812	815 3.27	74

**270×270×119 mm 9ADB1W1TS type**

Model No.	Rated Voltage [V]	Rated Input [W]	Rated Speed [min ⁻¹]	Max. Airflow [m ³ /min] [CFM]	Max. Static Pressure [Pa] [inchH ₂ O]	SPL [dB (A)]
9ADB1W1TS11P0H001	115	140	3100	22.3 787	760 3.05	73
9ADB1W1TS23P0H001	230	140	3100	22.3 787	760 3.05	73

AC Fan



60×60×28 mm

Model No.	Voltage [V]	Input [W]	Rated Speed [min ⁻¹]	Max. Airflow [m ³ /min]	Max. Airflow [CFM]	Max. Static Pressure [Pa]	Max. Static Pressure [inchH ₂ O]	SPL [dB (A)]
109-180	100	5/4	2250/2700	0.27/0.33	9.5/11.7	11.8/18.6	0.047/0.075	24/26
109-183	115							



60×60×38 mm

Model No.	Voltage [V]	Input [W]	Rated Speed [min ⁻¹]	Max. Airflow [m ³ /min]	Max. Airflow [CFM]	Max. Static Pressure [Pa]	Max. Static Pressure [inchH ₂ O]	SPL [dB (A)]
109-130	100	6/5	2600/3150	0.33/0.4	11.7/14.1	16.3/23.3	0.065/0.094	28/30
109-133	115							



80×80×20 mm

Model No.	Voltage [V]	Input [W]	Rated Speed [min ⁻¹]	Max. Airflow [m ³ /min]	Max. Airflow [CFM]	Max. Static Pressure [Pa]	Max. Static Pressure [inchH ₂ O]	SPL [dB (A)]
109-210	100	6/5	2500/3000	0.44/0.53	15.5/18.7	23.5/31.4	0.094/0.126	26/31
109-213	115							



80×80×25 mm

Model No.	Voltage [V]	Input [W]	Rated Speed [min ⁻¹]	Max. Airflow [m ³ /min]	Max. Airflow [CFM]	Max. Static Pressure [Pa]	Max. Static Pressure [inchH ₂ O]	SPL [dB (A)]
109S050	100	9/7	2650/3100	0.63/0.76	22.3/26.9	27.5/38.3	0.11 /0.154	30/33
109S053	115							
109S051	200							
109S054	230							
109S030	100							
109S033	115							
109S031	200							
109S034	230							



80×80×38 mm

Model No.	Voltage [V]	Input [W]	Rated Speed [min ⁻¹]	Max. Airflow [m ³ /min]	Max. Airflow [CFM]	Max. Static Pressure [Pa]	Max. Static Pressure [inchH ₂ O]	SPL [dB (A)]
109-150	100	9/8	2700/3150	0.9/1.05	31.8/37.1	31.4/44.1	0.126/0.177	35/39
109-153	115							
109-151	200							
109-154	230							

The frequencies of 50/60 Hz are existing in Japan. Performance of AC fan varies depending on the frequency.
 Example: Rated speed 2250/2700 = 50 Hz → 2250, 60 Hz → 2700



80×80×42 mm

Model No.	Voltage [V]	Input [W]	Rated Speed [min ⁻¹]	Max. Airflow [m ³ /min] [CFM]	Max. Static Pressure [Pa] [inchH ₂ O]	SPL [dB (A)]
109-040UL	100					
109-043UL	115	10/9	2650/3100	0.85/1.0	30.0/35.3	24.5/35.3
109-041UL	200					
109-044UL	230					
109-047UL*	100	4/3.5	1500/1500	0.43/0.43	15.2/15.2	8.8/ 8.8
109-033UL*	115					

*These are low-speed models.



92×92×25 mm

Model No.	Voltage [V]	Input [W]	Rated Speed [min ⁻¹]	Max. Airflow [m ³ /min] [CFM]	Max. Static Pressure [Pa] [inchH ₂ O]	SPL [dB (A)]
109S091	100	8/7	2700/3100	0.95/1.1	33.6/38.9	39.2/49.0
109S093	115					
109S092	200	11/10				
109S094	230	10/9				
109S095	100	8/7	2400/2800	0.84/0.98	29.7/34.6	31.4/40.2
109S096*	100	7/6	1500/1700	0.55/0.65	19.4/23	12.5/16.3
109S193*	115					
109S192*	200					
109S194*	230	8/7				

*These are low-speed models.



92×92×25 mm



Model No.	Voltage [V]	Input [W]	Rated Speed [min ⁻¹]	Max. Airflow [m ³ /min] [CFM]	Max. Static Pressure [Pa] [inchH ₂ O]	SPL [dB (A)]
109S491	100	8/7	2700/3100	0.95/1.1	33.6/38.9	39.2/49.0
109S493	115					
109S492	200	11/10				
109S494	230	10/9				
109S495	100	8/7	2400/2800	0.84/0.98	29.7/34.6	31.4/40.2
109S496*	100	7/6	1500/1700	0.55/0.65	19.4/23	12.5/16.3

*These are low-speed models.



120×120×25 mm

Model No.	Voltage [V]	Input [W]	Rated Speed [min ⁻¹]	Max. Airflow [m ³ /min] [CFM]	Max. Static Pressure [Pa] [inchH ₂ O]	SPL [dB (A)]
109S085	100	13.5/12	2500/2900	1.95/2.3	68.9/81.3	48 /51.9
109S084	115					
109S088	200					
109S087	230					
109S081	100	9.5/8.5	2200/2350	1.7 /1.8	60.1/63.6	29.4/26.5
109S083	115					
109S082	200					
109S089	230	12/10	1400/1600	1.1 /1.25	38.9/44.2	14.7/18.6
109S086*	100					

*These are low-speed models.

AC Fan



120 × 120 × 25 mm

Sensor

Model No.	Voltage [V]	Input [W]	Rated Speed [min ⁻¹]	Max. Airflow [m ³ /min] [CFM]	Max. Static Pressure [Pa] [inchH ₂ O]	SPL [dB (A)]		
109S485	100							
109S484	115	13.5/12	2500/2900	1.95/2.3	68.9/81.3	48 /51.9		
109S488	200							
109S487	230							
109S486*	100	12/10	1400/1600	1.1 /1.25	38.9/44.2	14.7/18.6	0.059/0.075	24/27

*These are low-speed models.



120 × 120 × 38 mm

Model No.	Voltage [V]	Input [W]	Rated Speed [min ⁻¹]	Max. Airflow [m ³ /min] [CFM]	Max. Static Pressure [Pa] [inchH ₂ O]	SPL [dB (A)]		
109S075UL	100							
109S074UL	115	18/16	2700/3100	2.5 /2.9	88.3/102.5	57.9/68.7		
109S078UL	200							
109S072UL	230							
109S005	100							
109S005UL	100							
109S024	120							
109S024UL	115	14/12	2700/3100	2.35/2.7	83 / 95.4	55.9/65.7		
109S008	200							
109S008UL	200							
109S025	230							
109S025UL	230							
109S029UL		14/12	2450/2700	2.15/2.35	76 / 83	44.1/49.0	0.177/0.197	38/40
109S013		100	1800/2000	1.55/1.75	54.8/ 60.8	23.5/26.4	0.094/0.106	30/32
109S013UL								
109S006 *								
109S006UL *	115	10/10	1800/1900	1.56/1.64	55 / 57.9	20 /20.6	0.08 /0.083	30/31
109S010 *	200	7/7	1650/1700	1.45/1.5	51.2/ 53	17.6/17.6	0.071/0.071	28/28
109S010UL *	240	11/11	1800/1950	1.58/1.68	55.8/ 59.3	20.6/21.6	0.083/0.087	30/32

*These are low-speed models.



120 × 120 × 38 mm

Sensor

Model No.	Voltage [V]	Input [W]	Rated Speed [min ⁻¹]	Max. Airflow [m ³ /min] [CFM]	Max. Static Pressure [Pa] [inchH ₂ O]	SPL [dB (A)]		
109S405UL	100							
109S424UL	115	14/12	2700/3100	2.35/2.7	83 / 95.4	55.9/65.7		
109S408UL	200							
109S425UL	230							
109S429UL	100		2450/2700	2.15/2.35	76 / 83	44.1/49.0	0.177/0.197	38/40
109S406UL*		7/6	1650/1700	1.45/1.5	51 / 53	17.7/17.7	0.071/0.071	28/28
109S475UL	100							
109S474UL	115	18/16	2700/3100	2.5 /2.9	88.3/102.4	57.9/68.7		
109S478UL	200							
109S472UL	230							

*These are low-speed models.

The frequencies of 50/60 Hz are existing in Japan. Performance of AC fan varies depending on the frequency.
 Example: Rated speed 2250/2700 = 50 Hz → 2250, 60 Hz → 2700



160×160×51 mm

Model No.	Voltage [V]	Input [W]	Rated Speed [min ⁻¹]	Max. Airflow [m ³ /min] [CFM]	Max. Static Pressure [Pa] [inchH ₂ O]	SPL [dB (A)]
109-601	100					
109-604	115	37.5/33	2850/3350	7.2 /8.5	254.4/300.4	156.8/166.6
109-602	200					
109-603	230					
					0.63 /0.669	56/60



160×160×51 mm

Sensor

Model No.	Voltage [V]	Input [W]	Rated Speed [min ⁻¹]	Max. Airflow [m ³ /min] [CFM]	Max. Static Pressure [Pa] [inchH ₂ O]	SPL [dB (A)]
109-641	100					
109-644	115	37.5/33	2850/3350	7.2 /8.5	254.4/300.4	156.8/166.6
109-642	200					
109-643	230					
					0.63 /0.669	56/60



φ172×150×51 mm

Model No.	Voltage [V]	Input [W]	Rated Speed [min ⁻¹]	Max. Airflow [m ³ /min] [CFM]	Max. Static Pressure [Pa] [inchH ₂ O]	SPL [dB (A)]
109S301	100					
109S304	115	27/25	2900/3500	5.3 /6.4	187.3/226.1	147/196
109S302	200					
109S303	230					
					0.59 /0.787	51/56



φ172×51 mm

Model No.	Voltage [V]	Input [W]	Rated Speed [min ⁻¹]	Max. Airflow [m ³ /min] [CFM]	Max. Static Pressure [Pa] [inchH ₂ O]	SPL [dB (A)]
109-311	100					
109-314	115	27/25	2900/3500	5.3 /6.4	187.3/226.1	147/196
109-312	200					
109-313	230					
					0.59 /0.787	47/51



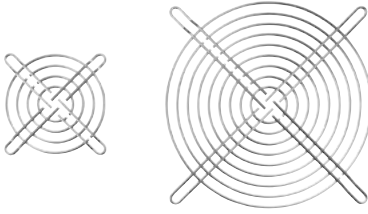
φ172×51 mm

Sensor

Model No.	Voltage [V]	Input [W]	Rated Speed [min ⁻¹]	Max. Airflow [m ³ /min] [CFM]	Max. Static Pressure [Pa] [inchH ₂ O]	SPL [dB (A)]
109-371	100					
109-374	115	27/25	2900/3500	5.3 /6.4	187.3/226.1	147/196
109-372	200					
109-373	230					
					0.59 /0.787	47/51

AC Fan

Finger Guards



High quality genuine finger guard prevents fans from inhaling dust and can enhance safety.

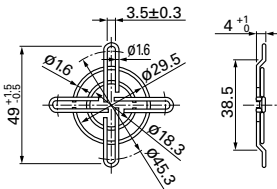
We recommend the use of the finger guard for stable operation. There is no significant difference in the airflow - static pressure characteristic when using the finger guard.

For use in environments subject to water splashes, cation electroplating models are recommended.

40 mm sq. type

Model no.	Surface treatment	Mass (g)
109-059	Nickel-chrome plating (silver)	7
109-059H	Cation electroplating (black)	

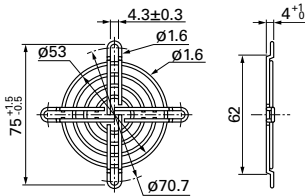
Inlet side, Outlet side



60 mm sq. type

Model no.	Surface treatment	Mass (g)
109-139E	Nickel-chrome plating (silver)	14.5
109-139H	Cation electroplating (black)	

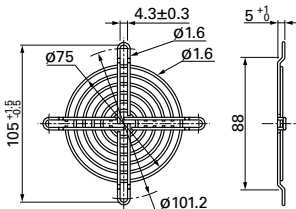
Inlet side, Outlet side



80 mm sq. type

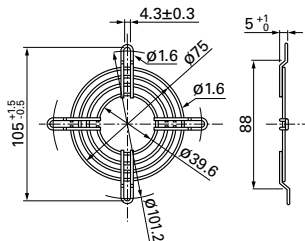
Model no.	Surface treatment	Mass (g)
109-049E	Nickel-chrome plating (silver)	21
109-049H	Cation electroplating (black)	

Inlet side, Outlet side



Model no.	Surface treatment	Mass (g)
109-049C	Nickel-chrome plating (silver)	17

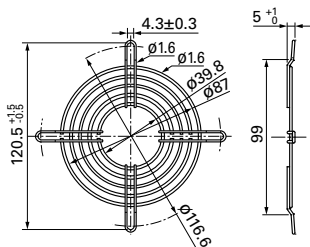
Outlet side



92 mm sq. type

Model no.	Surface treatment	Mass (g)
109-099C	Nickel-chrome plating (silver)	22

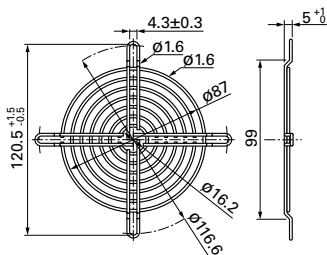
Outlet side



92 mm sq., °100 mm type

Model no.	Surface treatment	Mass (g)
109-099E	Nickel-chrome plating (silver)	29
109-099H	Cation electropainting (black)	

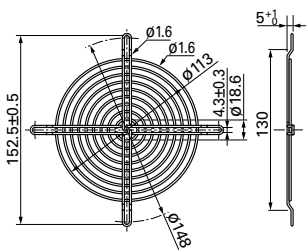
Inlet side, Outlet side



120 mm sq. type

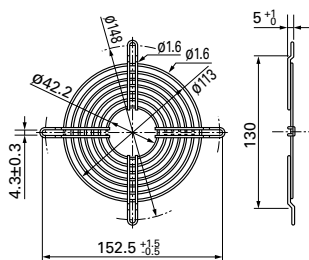
Model no.	Surface treatment	Mass (g)
109-019E	Nickel-chrome plating (silver)	42
109-019K	Cation electropainting (black)	

Inlet side, Outlet side



Model no.	Surface treatment	Mass (g)
109-019C	Nickel-chrome plating (silver)	32
109-019H	Cation electropainting (black)	

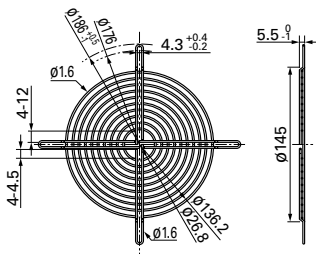
Outlet side



140 mm sq. type

Model no.	Surface treatment	Mass (g)
109-719	Nickel-chrome plating (silver)	51
109-719H	Cation electropainting (black)	

Inlet side, Outlet side



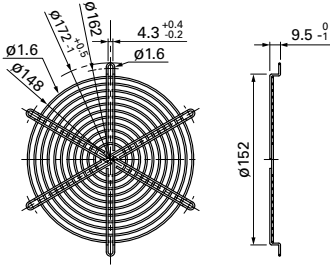
Finger Guards

°172 mm Sidecut, Round type

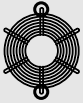
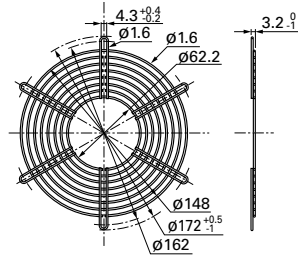
Model no.	Surface treatment	Mass (g)
109-319E	Nickel-chrome plating (silver)	69
109-319H	Cation electropainting (black)	

Model no.	Surface treatment	Mass (g)
109-320	Nickel-chrome plating (silver)	53

Inlet side, Outlet side



Outlet side

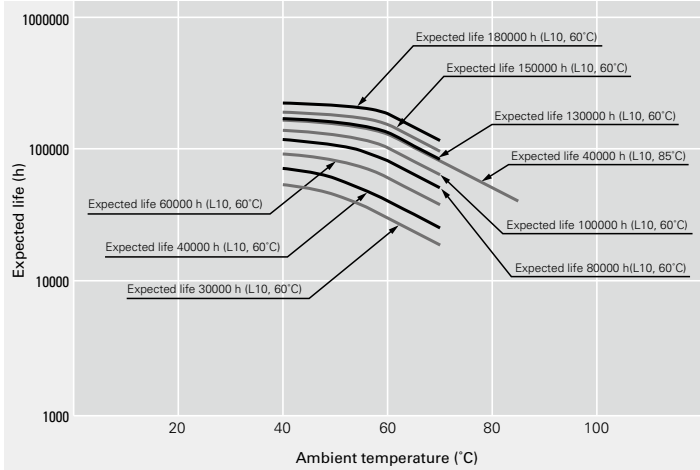


°172 mm type: (model: 109-319E, 109-319H, 109-320)
Please install at the point of symmetry.

Reliability and expected life

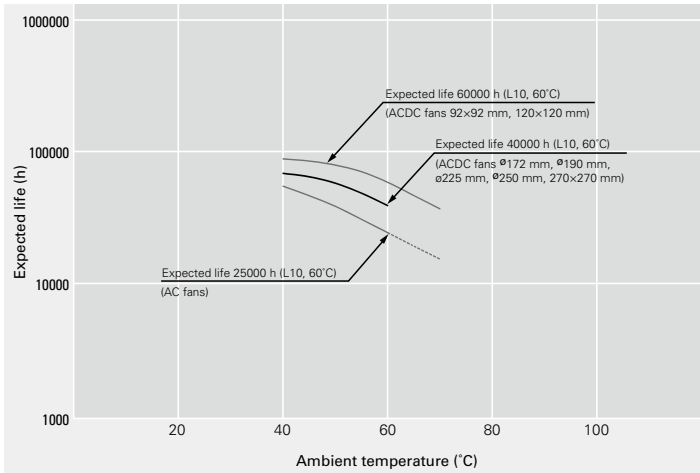
A cooling fan generally cools itself as well. The temperature rise of the motor is relatively low and the temperature rise of the grease in the bearings is also low, so expected life is longer than general some other motors. Since the service life of bearings is a theoretical value that applies when they are ideally lubricated, the life of lubricant can be regarded as expected life of the fan. DC fan consumes less power and its temperature rise of bearing is very low. When the measurement conditions are: L10 (the remaining product life in the lifespan test is 90%), with an ambient temperature of 60°C (85°C for Wide Temperature Range Fans), at the rated voltage, and continuously run in a free air state. The table below indicates the relationship between ambient temperature and expected life estimated on the basis of our life tests and same other tests conducted by SANYO DENKI.

Expected life of DC Fans



Rated voltage, continuously run in a free air state, survival rate of 90%

Expected life of AC Fans



Rated voltage, continuously run in a free air state, survival rate of 90%

Operating precautions

Temperature conditions

Operating temperature: Refer to the specifications table for each model.

Storage temperature: -20 to +70°C/-30 to +70°C (Varies for each model/Non condensing)

Rapid change in temperature may cause condensation. Prevent condensation when storing. Condensation may affect lubrication performance and insulation.

Handling precautions

The fan motor is equipped with a precision ball bearing. Therefore, please handle the motors carefully in order not to shock the bearings.

Recommended screw torque

This shows the recommended values for the screw torque when installing the fans. If the tightening torque is higher than the recommended values, the fan can be deformed or damaged. Use care when tightening.

Also, be sure to always use a fan with a ribbed structure when using screws to pass through and secure the fan.

DC fan

Fan mounting hole diameter [mm]	Nominal screw diameter	Recommended screw torque
ø3.5, ø3.7	M3	0.44 N·m max.
ø4.3, ø4.5	M4	0.78 N·m max.
ø4.3, ø4.5	M4	0.98 N·m max. (ø172 mm×51 mm, ø172 mm×150 mm×51 mm, ø200×70 mm)

AC fan

Fan mounting hole diameter [mm]	Nominal screw diameter	Recommended screw torque
ø3.5, ø3.7	M3	0.44 N·m max.
ø4.3	M4	0.58 N·m max. (120 mm×120 mm max.)
ø4.3	M4	0.78 N·m max. (ACDC fan, ø172 mm)
ø5.5	M4, M5	0.78 N·m max. (160 mm×160 mm)

■ ECO PRODUCTS



SANYO DENKI's ECO PRODUCTS are designed with the concept of lessening impact on the environment in the process from product development to waste.

The product units and packaging materials are designed for reduced environmental impact. We have established our own

assessment criteria on the environmental impacts applicable to all processes, ranging from design to manufacture.

Those products that satisfy the criteria are accredited as ECO PRODUCTS.

- Please read the "Safety Precautions" on our website once you have decided on a product for use.
- This product may be regulated under export and trade control regulations of each country. During export of each product, compliance to the export regulations of each country is highly recommended.
- To protect against electrolytic corrosion that may occur in locations with strong electromagnetic noise, we provide fans that are unaffected by electrolytic corrosion.

<https://www.sanyodenki.com/>

SANYO DENKI CO., LTD.

3-33-1 Minami-Otsuka, Toshima-ku, Tokyo 170-8451, Japan

TEL: +81 3 5927 1020

Singapore Branch

988 Toa Payoh North, #04-08, Singapore 319002

TEL: +65 6223 1071

Jakarta Representative Office

Summitmas II 4th Floor, Jl. Jend. Sudirman Kav.61-62, Jakarta 12190, Indonesia

TEL: +62 21 252 3202

SANYO DENKI EUROPE SA.

P.A. PARIS NORD II, 48 Allée des Erables-VILLEPINTE, BP.57286,
F-95958 ROISSY CDG CEDEX, France

TEL: +33 1 48 63 26 61

Poland Branch

ul. Wodociagowa 56 30-205 Kraków, Polska

TEL: +48 12 427 30 73

SANYO DENKI AMERICA, INC.

468 Amapola Avenue Torrance, CA 90501, U.S.A.

TEL: +1 310 783 5400

SANYO DENKI SHANGHAI CO., LTD.

Room 2106-2110, Bldg A, Far East International Plaza, No.319, Xianxia Road,
Shanghai, 200051, China

TEL: +86 21 6235 1107

SANYO DENKI (H.K.) CO., LIMITED

Room 1603, 16/F, South Tower, Concordia Plaza, 1 Science Museum Road,
TST East, Kowloon, Hong Kong

TEL: +852 2312 6250

SANYO DENKI TAIWAN CO., LTD.

N-711, 7F, Chia Hsin 2nd Bldg., No.96, Sec.2, Zhongshan N. Rd., Taipei 10449,
Taiwan

TEL: +886 2 2511 3938

SANYO DENKI GERMANY GmbH

Frankfurter Strasse 80-82, 65760 Eschborn, Germany

TEL: +49 6196 76113 0

SANYO DENKI KOREA CO., LTD.

15F, KDB Building, 372, Hangang-daero, Yongsan-gu, Seoul, 04323, Korea

TEL: +82 2 773 5623

Busan Branch

8F, CJ Korea Express Building, 119, Daegyo-ro, Jung-gu, Busan, 48943, Korea

TEL: +82 51 796 5151

SANYO DENKI (Shenzhen) CO., LTD.

04B-07, 11F, AVIC Center, No.1018 Huafu Road, Futian District,
Shenzhen, 518031, China

TEL: +86 755 3337 3868

Chengdu Branch

Room2105B, Block A, Times Plaza, 2 Zongfu Road, Jinjiang District,
Chengdu, 610016, Sichuan, China

TEL: +86 28 8661 6901

SANYO DENKI (THAILAND) CO., LTD.

388 Exchange Tower, 25th Floor, Unit 2501-1, Sukhumvit Road, Klongtoey,
Klongtoey, Bangkok 10110 Thailand

TEL: +66 2261 8670

SANYO DENKI INDIA PRIVATE LIMITED

#14 (Old No.6/3), Avenue Road, Nungambakkam, Chennai - 600034,
Tamil Nadu, India

TEL: +91 44 420 384 72

SANYO DENKI (Tianjin) CO., LTD.

Room AB 16th Floor TEDA Building, No. 256 Jie Fang Nan Road, Hexi District,
Tianjin 300042 China

TEL: +86 22 2320 1186

Beijing Branch

Room1807, Gaohe Lanfeng Buliding, No.98 East Third Ring South Road,
Chaoyang District, Beijing 100122 China

TEL: +86 10 5861 1508

The names of companies and/or their products specified in this catalog are the trade names, and/or trademarks and/or registered trademarks of such respective companies.

San Ace is a trademark of SANYO DENKI CO., LTD.

Specifications are subject to change without notice.

CATALOG No. C1011B014 '22.3.IT